

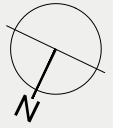
THE MODERN HOUSE

# Newhouse Farm III

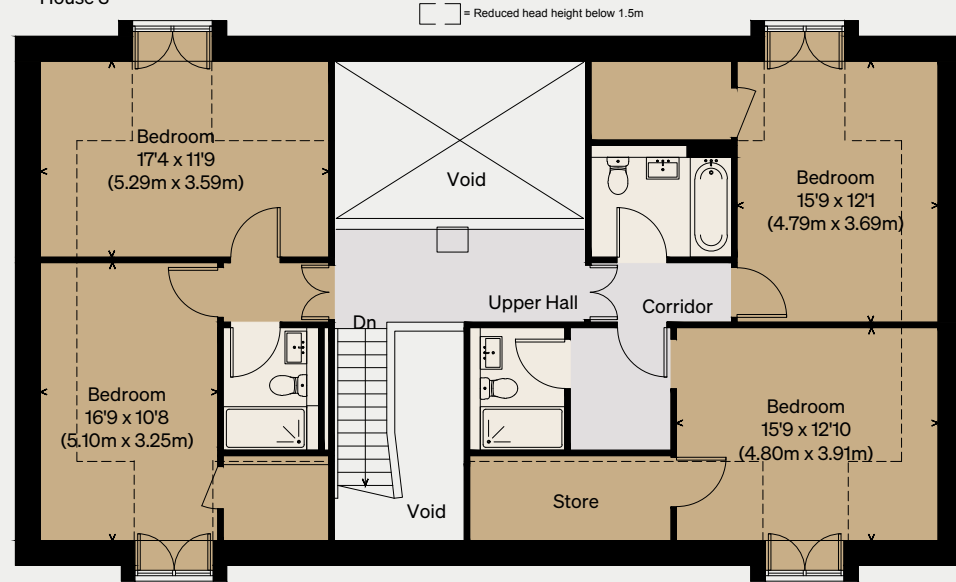
CAUSEWAY END, ESSEX

Approximate Floor Area = 243 sq m / 2616 sq ft  
(Excluding Voids / Restricted Head Heights)  
Garage / Store = 45 sq m / 542 sq m  
Total = 285 sq m / 3067 sq ft

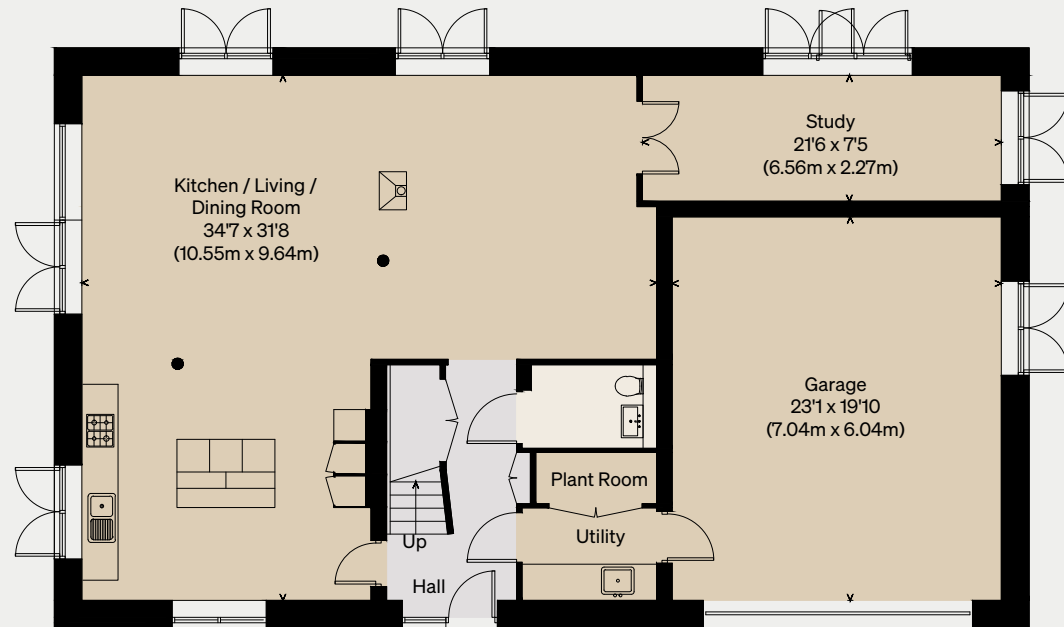
Illustration for identification purposes only,  
measurements are approximate, not to scale



House 3



FIRST FLOOR



GROUND FLOOR

THE MODERN HOUSE


# Newhouse Farm I

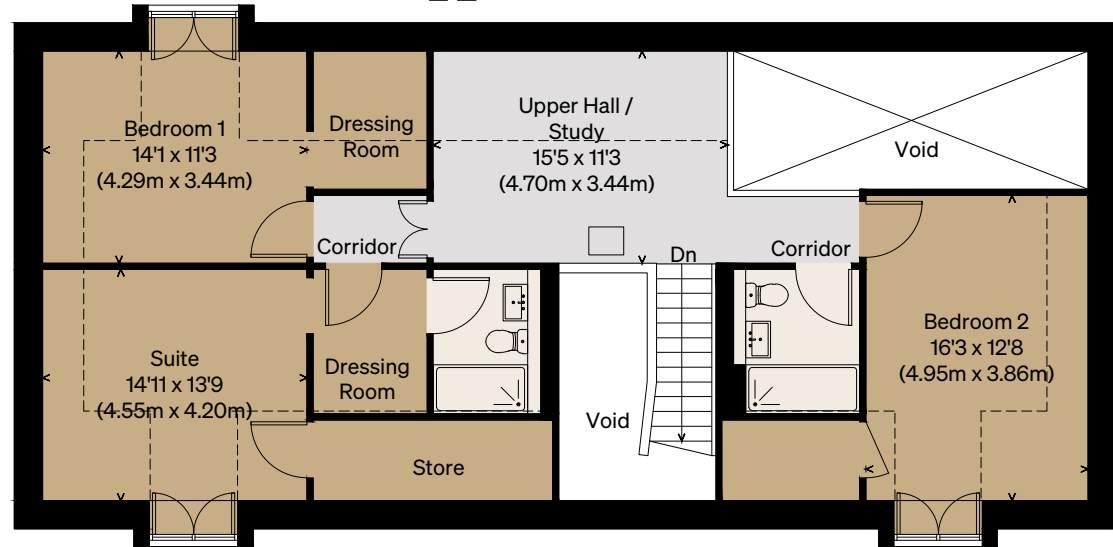
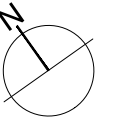
CAUSEWAY END, ESSEX

Approximate Floor Area = 170 sq m / 1830 sq ft  
(Excluding Voids / Restricted Head Heights)  
Garage / Store = 49 sq m / 527 sq ft  
Total = 219 sq m / 2357 sq ft

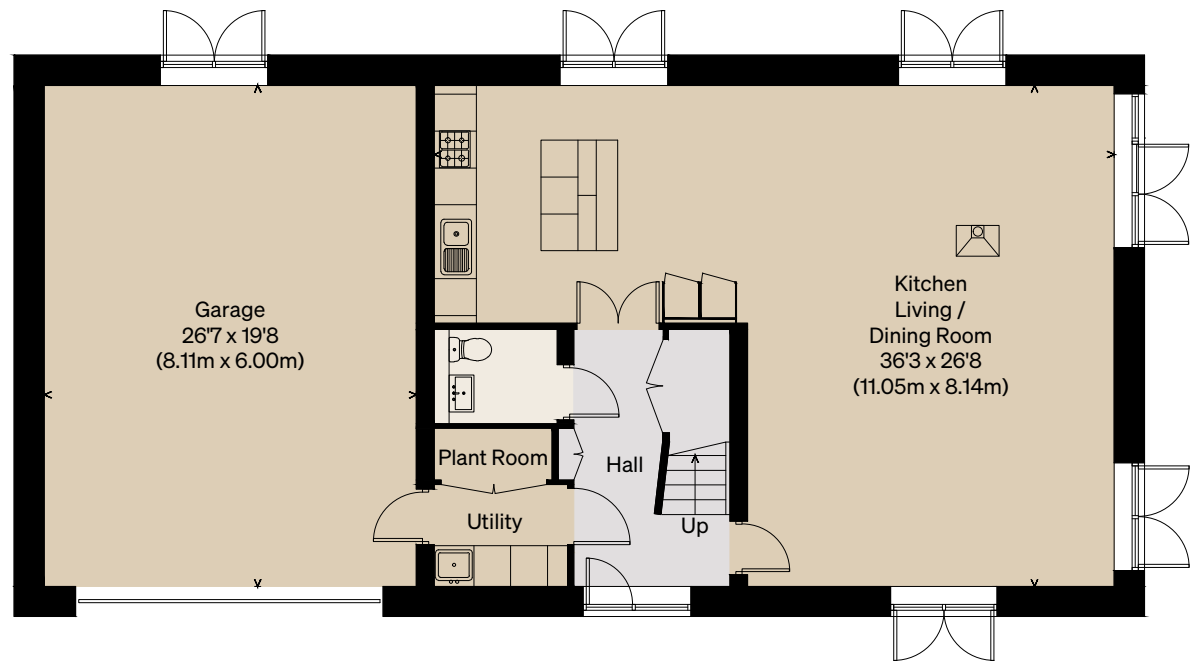
Illustration for identification purposes only,  
measurements are approximate, not to scale

House 1

 = Reduced head height below 1.5m



FIRST FLOOR



GROUND FLOOR

THE MODERN HOUSE

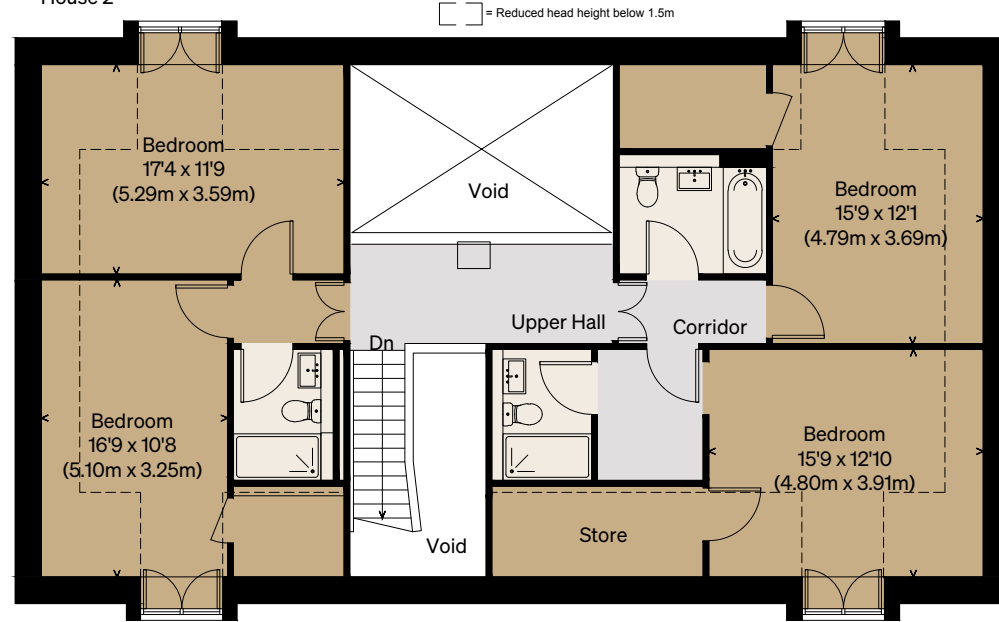
# Newhouse Farm II

CAUSEWAY END, ESSEX

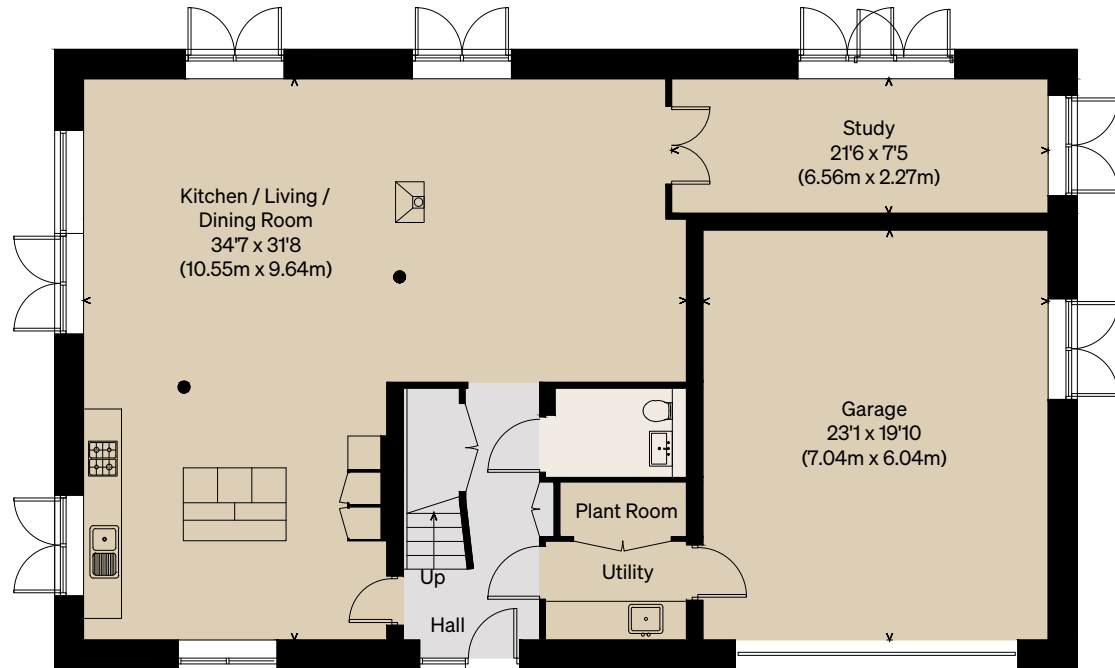
Approximate Floor Area = 220 sq m / 2368 sq ft  
(Excluding Voids / Restricted Head Heights)  
Garage/Store = 42 sq m / 452 sq ft  
Total = 262 sq m / 2820 sq ft

Illustration for identification purposes only,  
measurements are approximate, not to scale

House 2



FIRST FLOOR



GROUND FLOOR

THE MODERN HOUSE

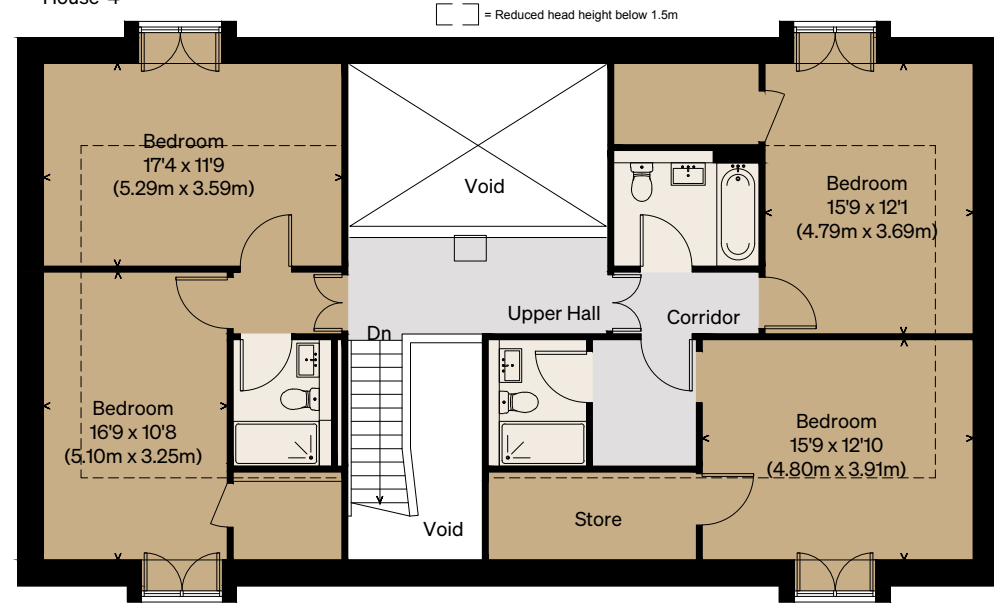
# Newhouse Farm IV

CAUSEWAY END, ESSEX

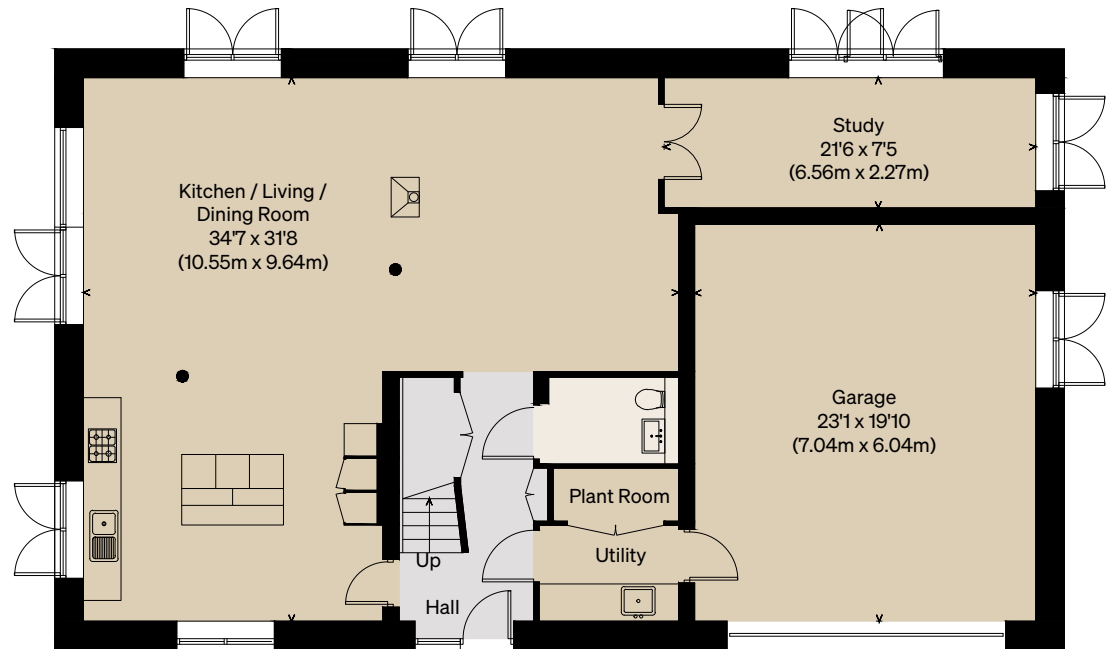
Approximate Floor Area = 220 sq m / 2368 sq ft  
(Excluding Voids / Restricted Head Heights)  
Garage/Store = 42 sq m / 452 sq ft  
Total = 262 sq m / 2820 sq ft

Illustration for identification purposes only,  
measurements are approximate, not to scale

House 4



FIRST FLOOR



GROUND FLOOR

THE MODERN HOUSE

# Newhouse Farm

CAUSEWAY END, ESSEX

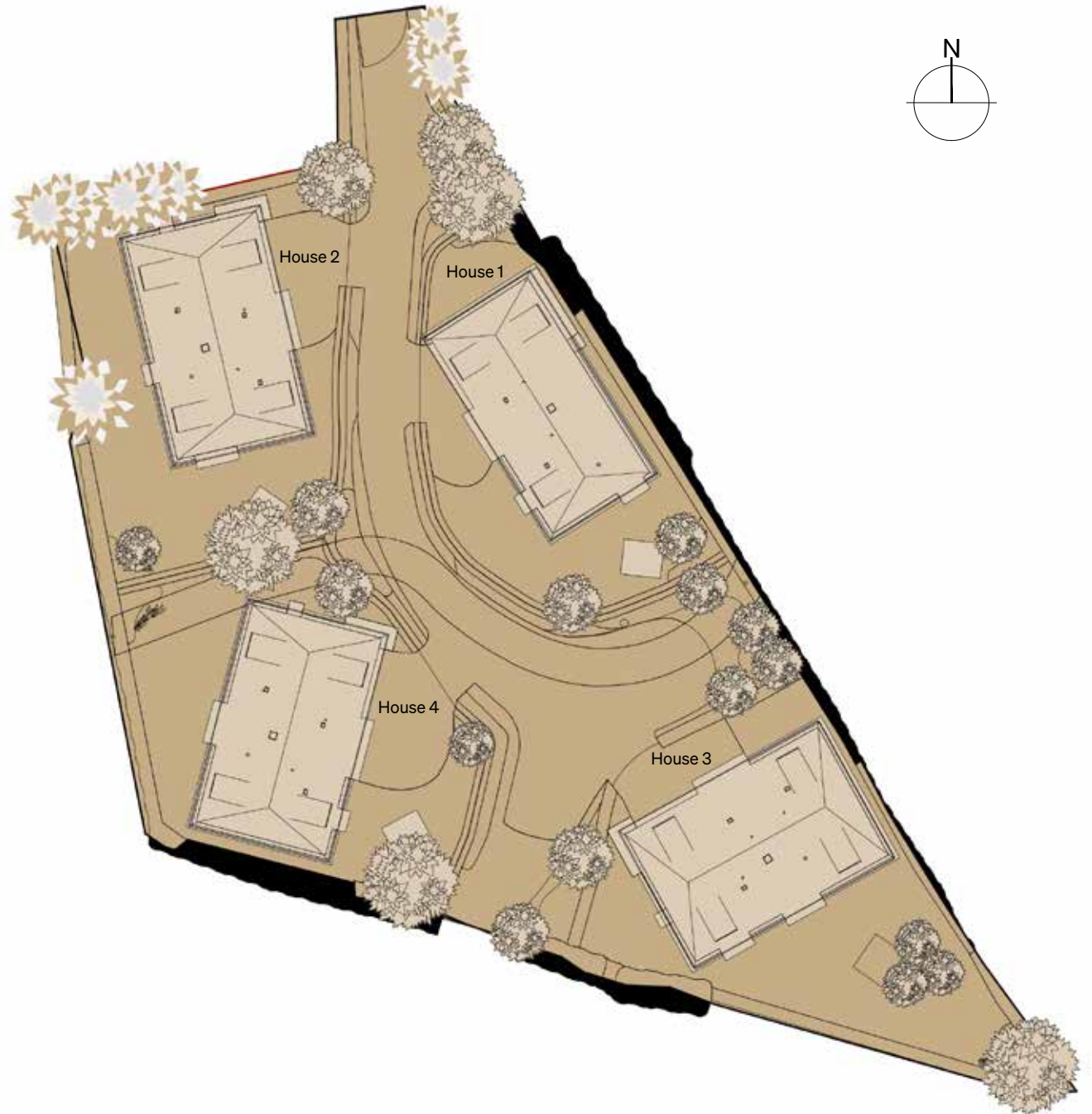


Illustration for identification purposes only,  
measurements are approximate, not to scale