

THE MODERN HOUSE

Approximate Floor Area = 316.1 sq m / 3402 sq ft

Cellar = 15.3 sq m / 165 sq ft

Total = 331.4 sq m / 3567 sq ft

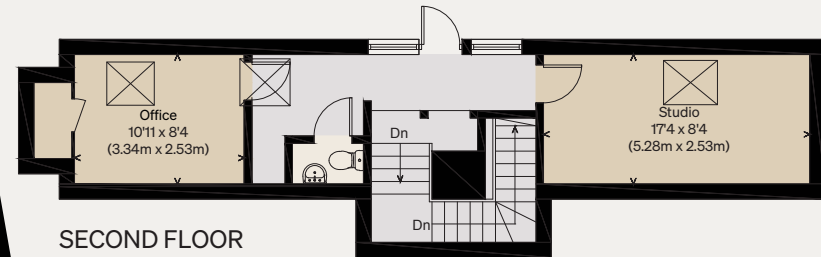
Cherry Tree Inn

HALESWORTH, SUFFOLK

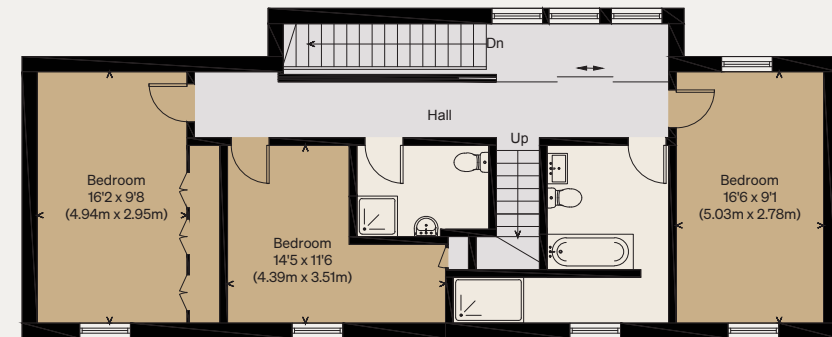
Illustration for identification purposes only,
measurements are approximate, not to scale



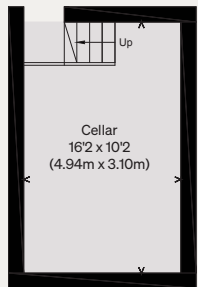
GROUND FLOOR



SECOND FLOOR



FIRST FLOOR



CELLAR