

THE MODERN HOUSE

The Old Vicarage

KINGSDOWN, KENT

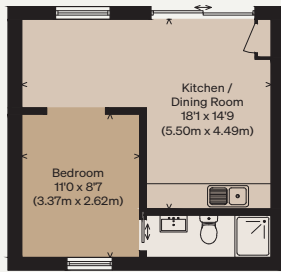
Approximate Floor Area = 234.5 sq m / 2524 sq ft

Annexe = 30.3 sq m / 326 sq ft

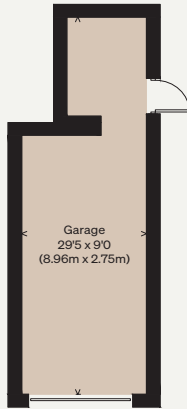
Garage = 21.8 sq m / 235 sq ft

Total = 286.6 sq m / 3085 sq ft

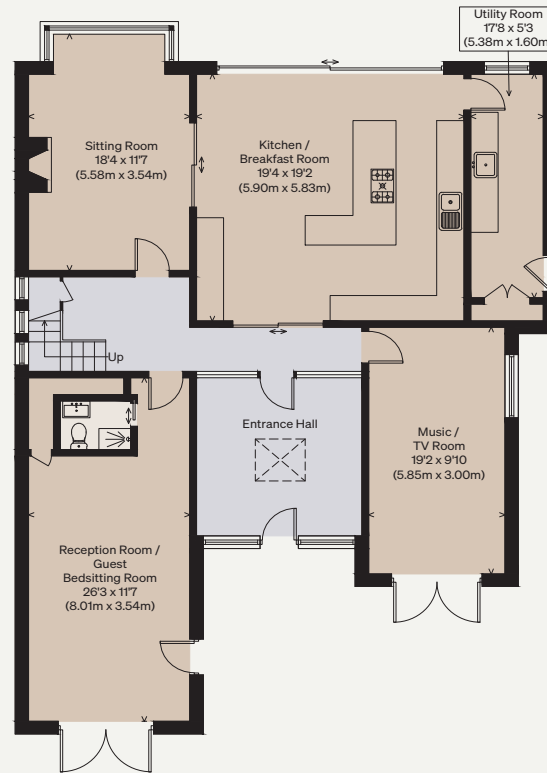
Illustration for identification purposes only,
measurements are approximate, not to scale



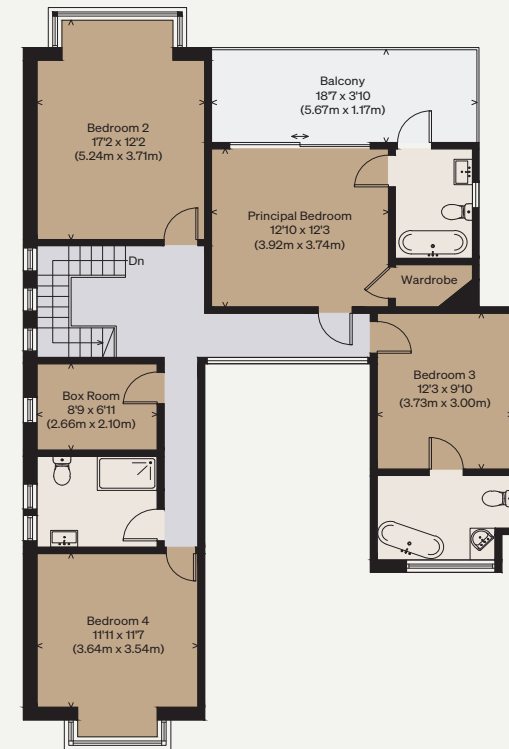
ANNEXE
(Not Shown In Actual
Location / Orientation)



(Not Shown In Actual
Location / Orientation)



GROUND FLOOR



FIRST FLOOR