

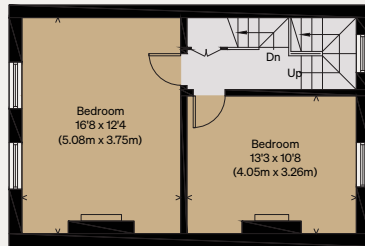
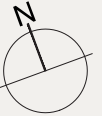
THE MODERN HOUSE

Approximate Floor Area = 223.5 sq m / 2406 sq ft
Eaves / Reduced Head Room = 16.3 sq m / 175 sq ft
Total = 239.8 sq m / 2581 sq ft

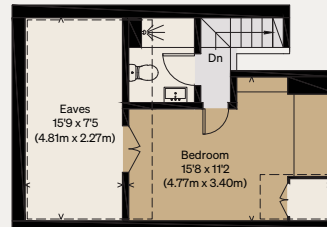
Trafalgar Avenue

LONDON SE15

Illustration for identification purposes only,
measurements are approximate, not to scale



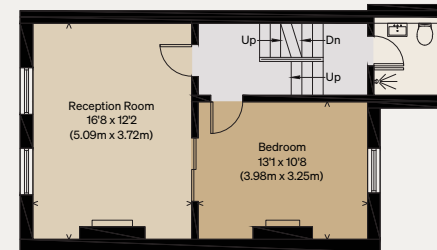
SECOND FLOOR



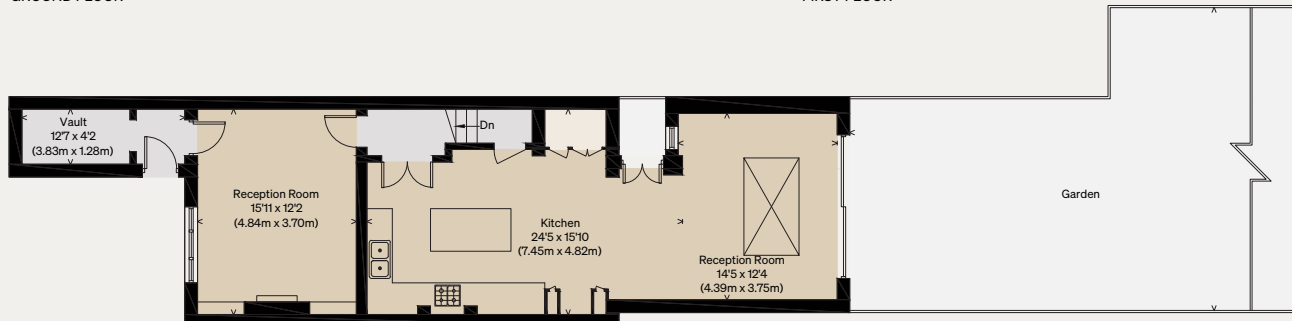
THIRD FLOOR



GROUND FLOOR



FIRST FLOOR



LOWER GROUND FLOOR