

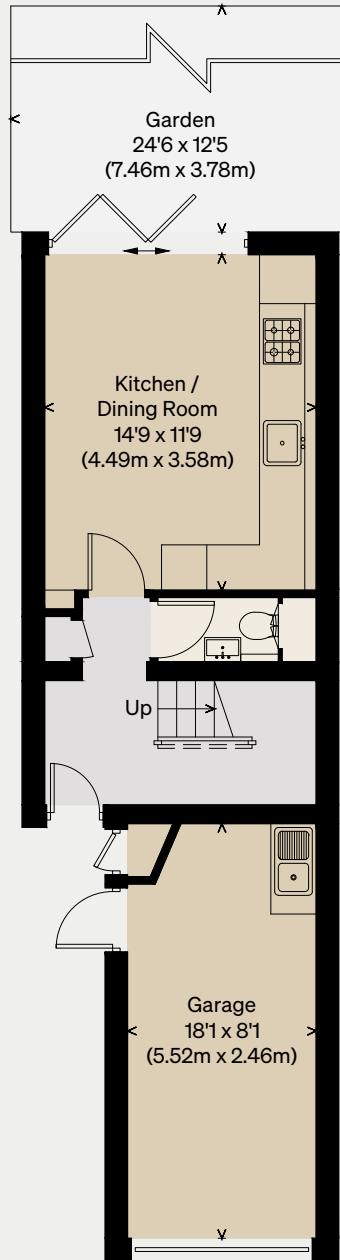
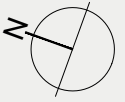
THE MODERN HOUSE

Rawnsley Avenue

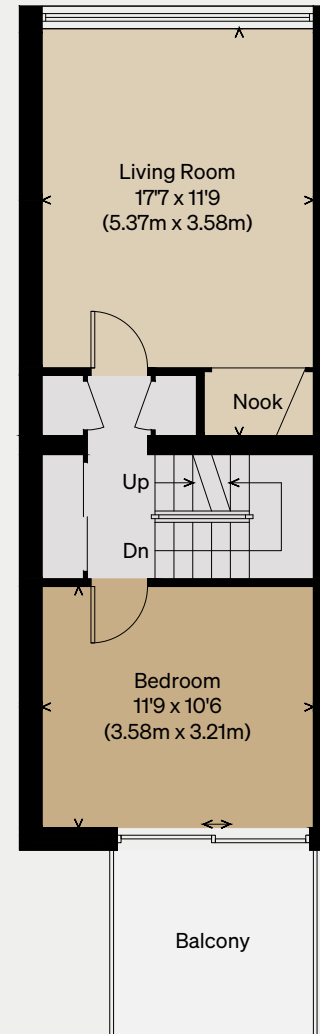
LONDON CR4

Approximate Floor Area = 103 sq m / 1109 sq ft
Garage = 13.9 sq m / 150 sq ft
Total = 116.9 sq m / 1259 sq ft

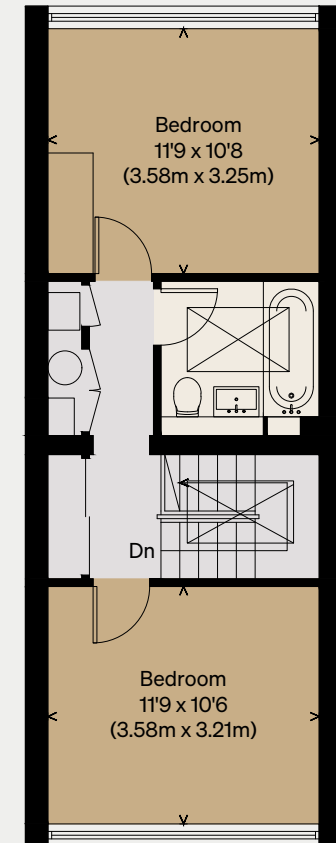
Illustration for identification purposes only,
measurements are approximate, not to scale



GROUND FLOOR



FIRST FLOOR



SECOND FLOOR