

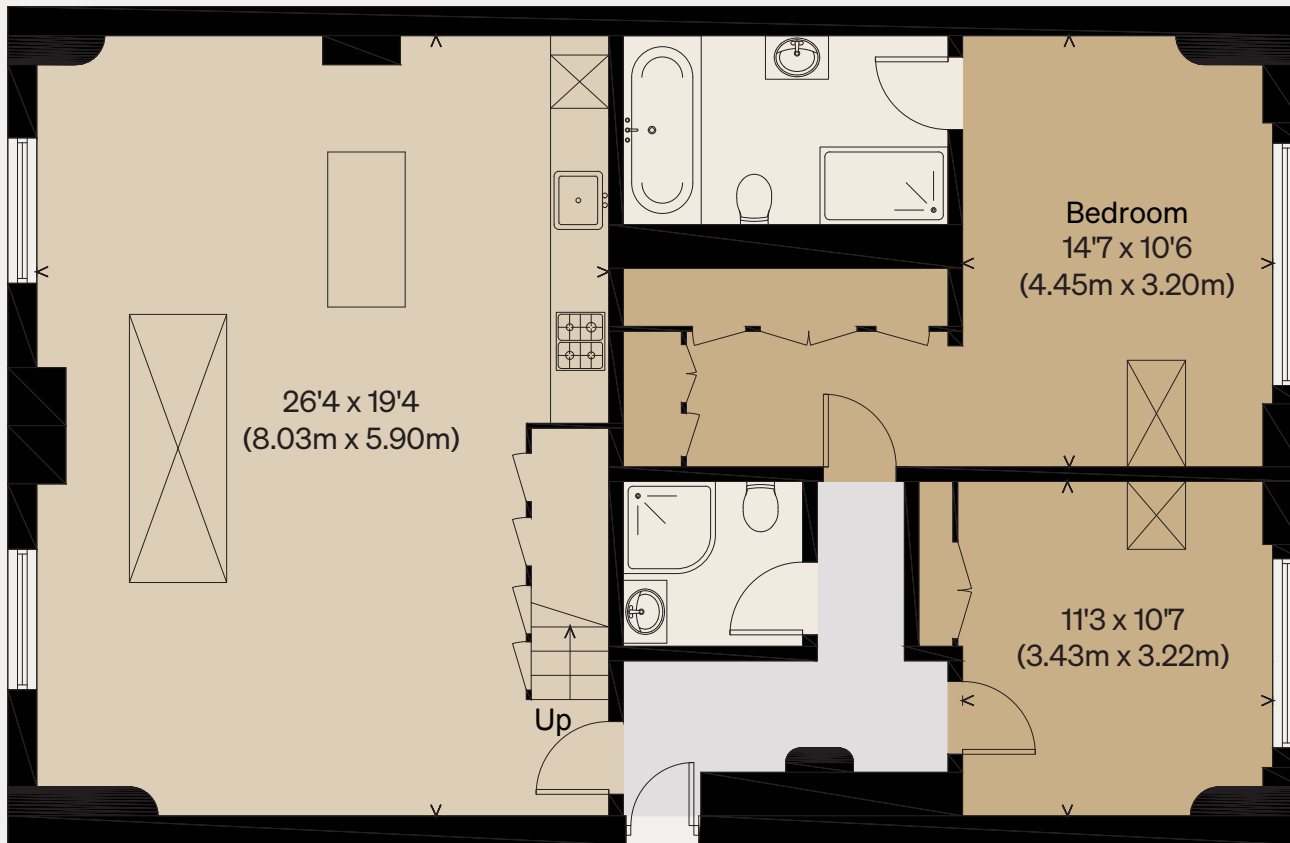
THE MODERN HOUSE

Approximate Floor Area = 109.5 sq m / 1179 sq ft  
Mezzanine (Including Areas of Reduced Head Height) = 22.32 sq m / 240 sq ft  
Total = 131.7 sq m / 1418 sq ft

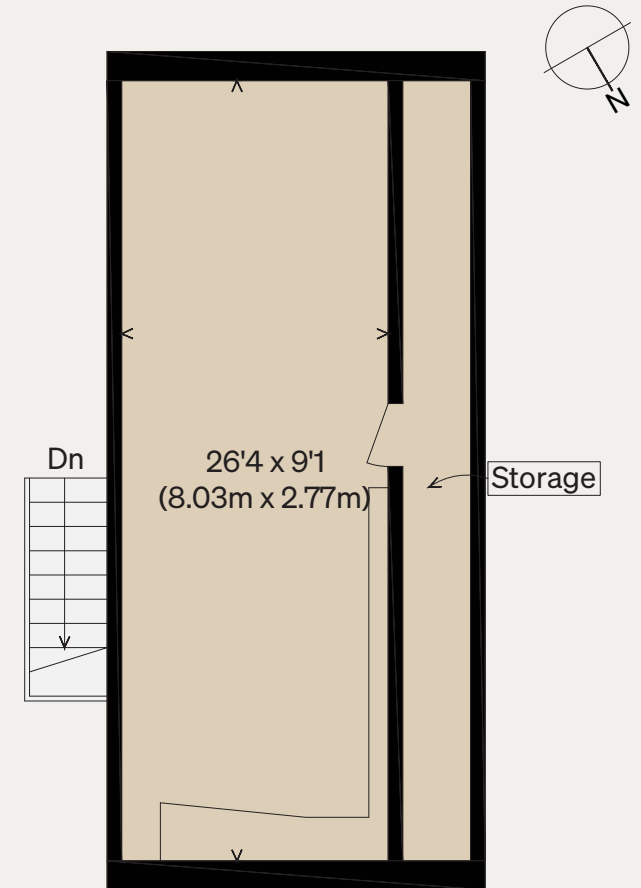
# Alaska Building IV

LONDON, SE1

Illustration for identification purposes only,  
measurements are approximate, not to scale



GROUND FLOOR



MEZZANINE