

THE MODERN HOUSE

Paskeston Barns

COSHESTON, PEMBROKESHIRE

Approximate Floor Area

Existing Barn 1 = 68.8 sq m / 740 sq ft

Existing Barn 2 = 95.9 sq m / 1032 sq ft

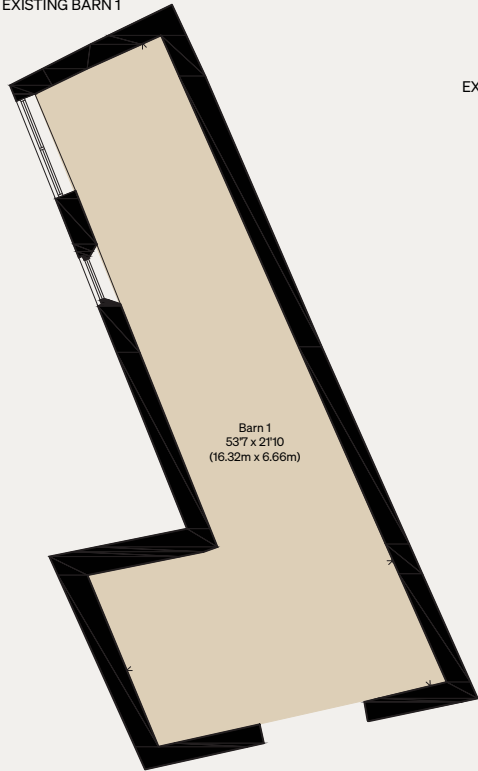
Existing Barn 3 = 29.9 sq m / 322 sq ft

Existing Barn 4 = 12 sq m / 129 sq ft

Total = 206.6 sq m / 2223 sq ft

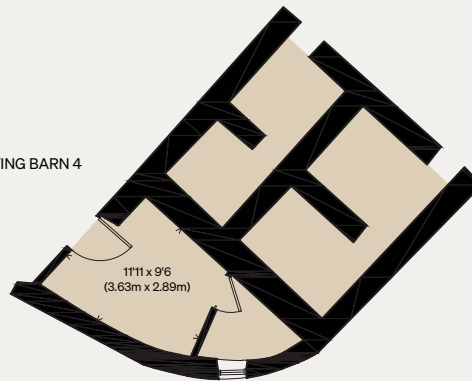
Illustration for identification purposes only,
measurements are approximate, not to scale

EXISTING BARN 1



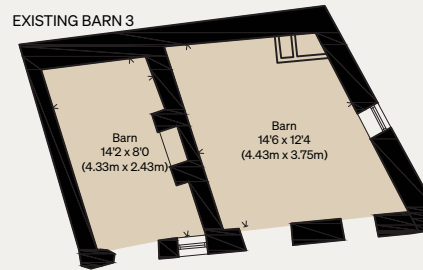
GROUND FLOOR

EXISTING BARN 4



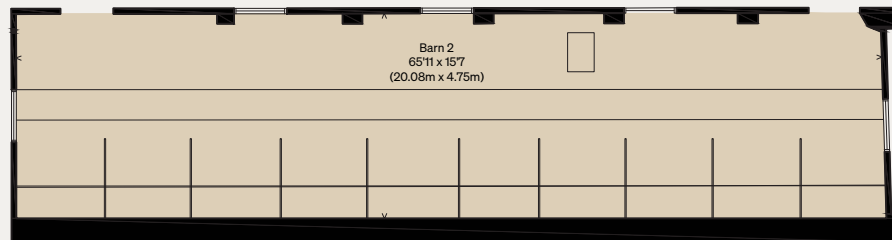
GROUND FLOOR

EXISTING BARN 3



GROUND FLOOR

EXISTING BARN 2



GROUND FLOOR

THE MODERN HOUSE

Paskeston Barns

COSHESTON, PEMBROKESHIRE

Approximate Floor Area

Proposed Barn 1 = 69 sq m / 743 sq ft

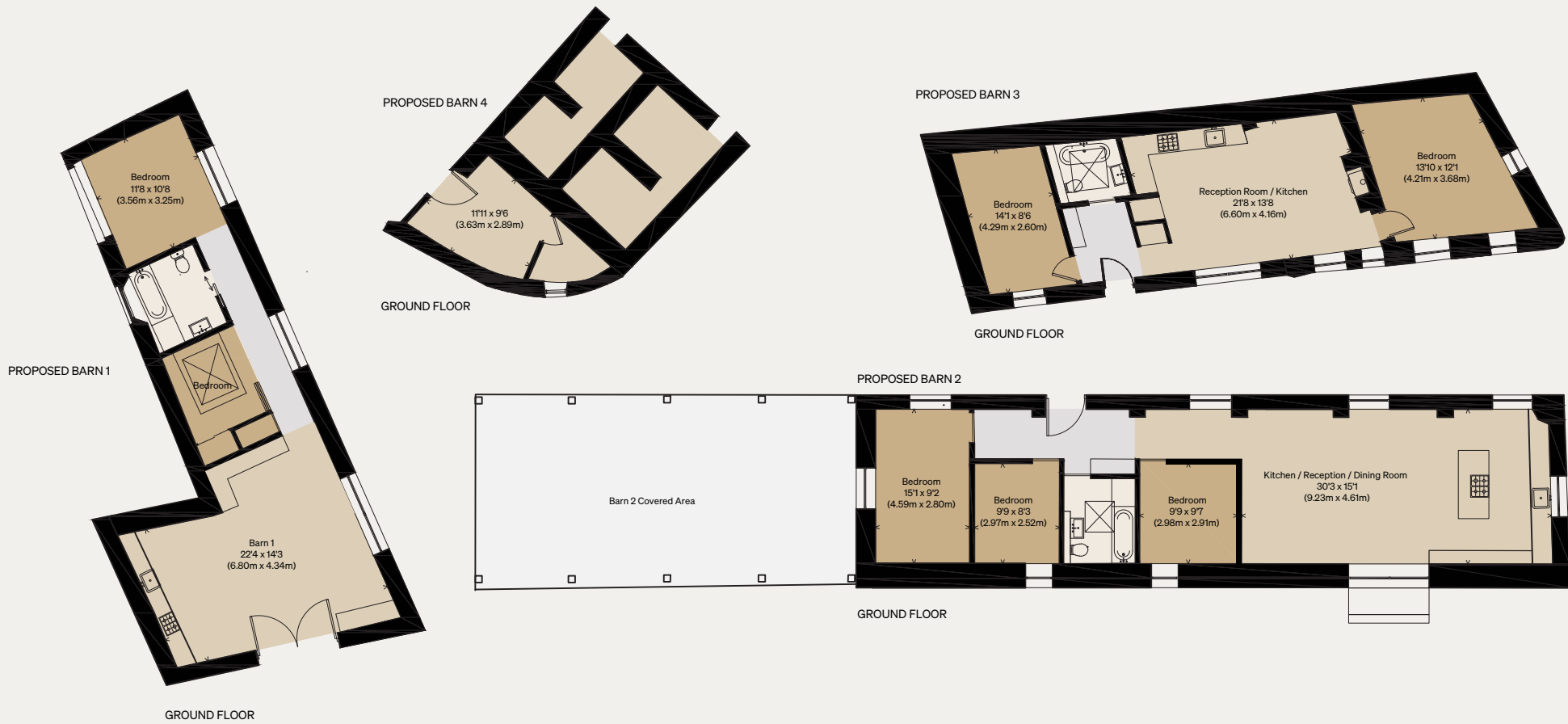
Proposed Barn 2 = 92.9 sq m / 1000 sq ft

Proposed Barn 3 = 67.6 sq m / 728 sq ft

Proposed Barn 4 = 12 sq m / 129 sq ft

Total = 241.5 sq m / 2600 sq ft

Illustration for identification purposes only,
measurements are approximate, not to scale



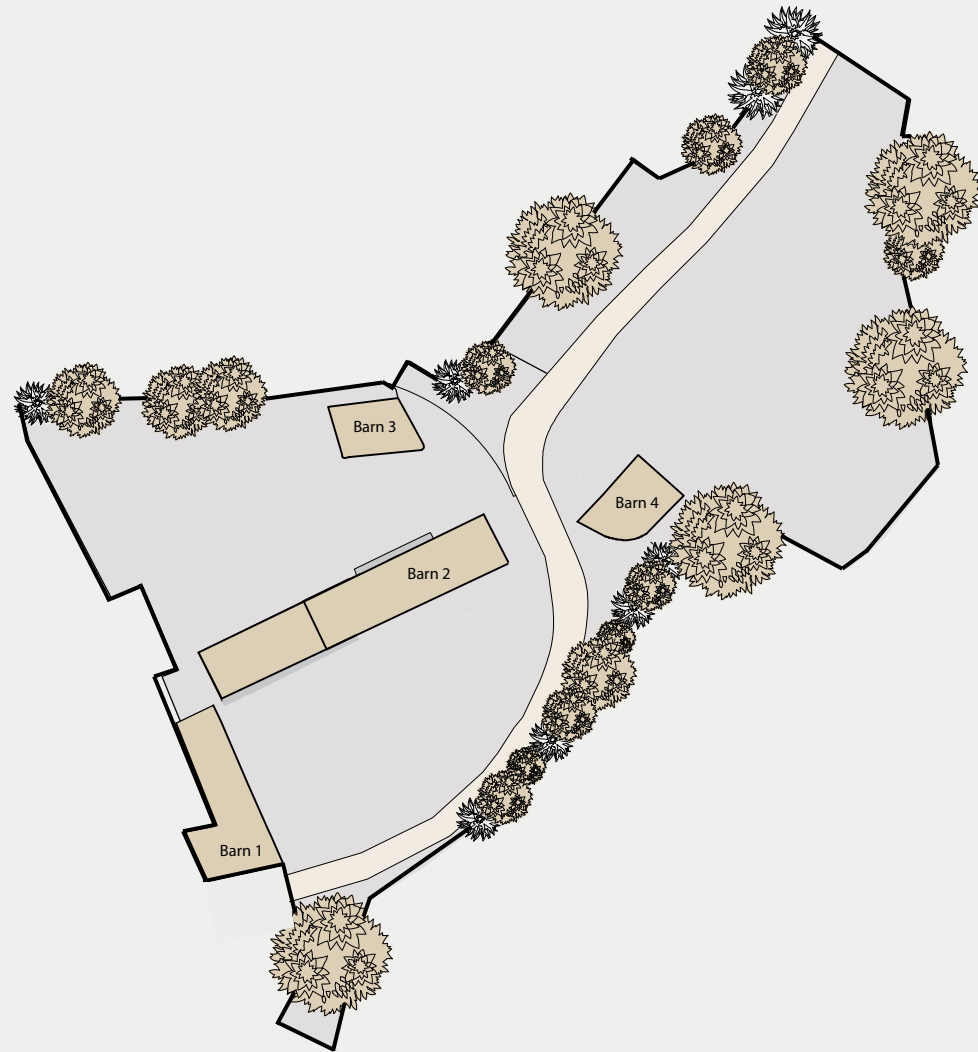
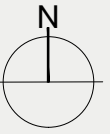
THE MODERN HOUSE

Paskeston Barns

COSHESTON, PEMBROKESHIRE

EXISTING SITE PLAN

Illustration for identification purposes only,
measurements are approximate, not to scale



THE MODERN HOUSE

Paskeston Barns

COSHESTON, PEMBROKESHIRE

PROPOSED SITE PLAN

Illustration for identification purposes only,
measurements are approximate, not to scale

