

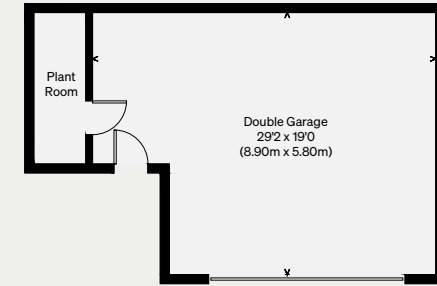
THE MODERN HOUSE

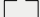
Orrell Fold Barn

BOLTON, GREATER MANCHESTER

Approximate Floor Area = 298.9 sq m / 3218 sq ft
Garage = 44.5 sq m / 479 sq ft
Total = 343.4 sq m / 3697 sq ft

Illustration for identification purposes only,
measurements are approximate, not to scale

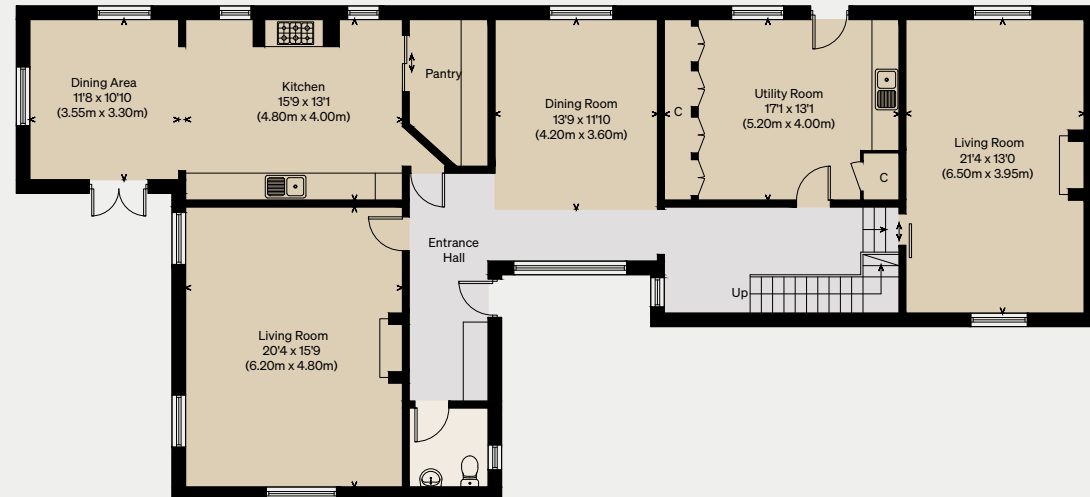


 = Reduced head height below 1.5m

(Not Shown In Actual Location / Orientation)



FIRST FLOOR



GROUND FLOOR