

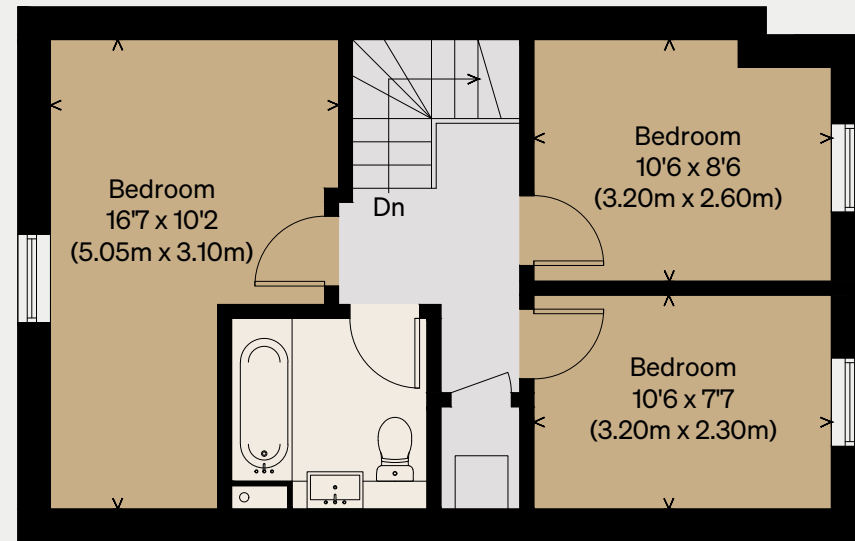
THE MODERN HOUSE

## Tamarind Mews

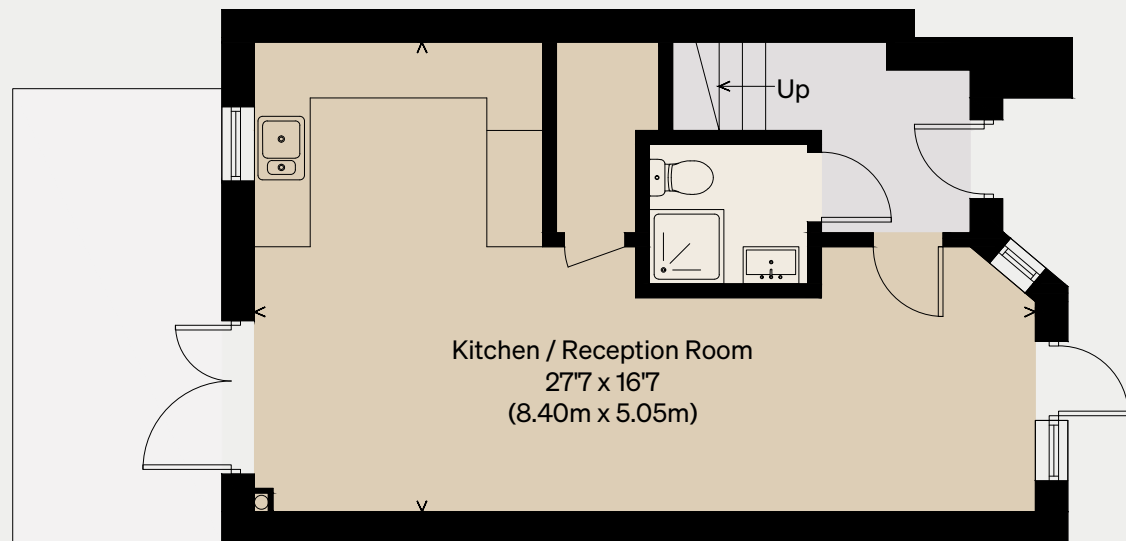
LONDON N18

Approximate Floor Area = 82.0 sq m / 883 sq ft

Illustration for identification purposes only,  
measurements are approximate, not to scale



FIRST FLOOR



GROUND FLOOR

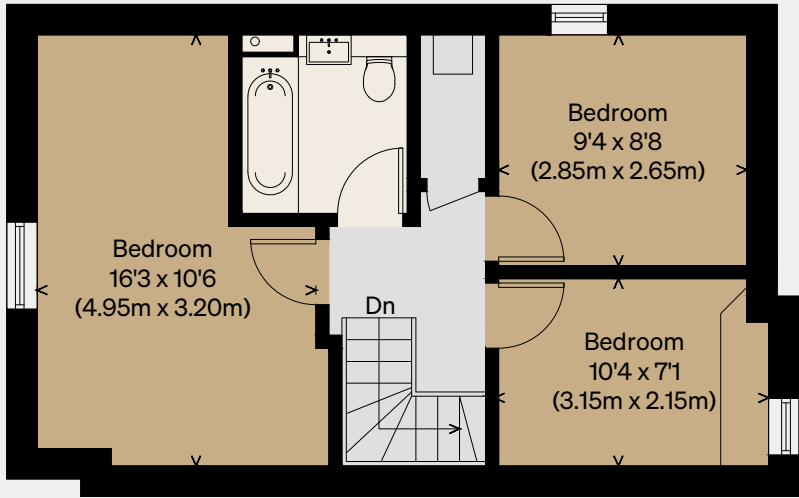
THE MODERN HOUSE

Tamarind Mews

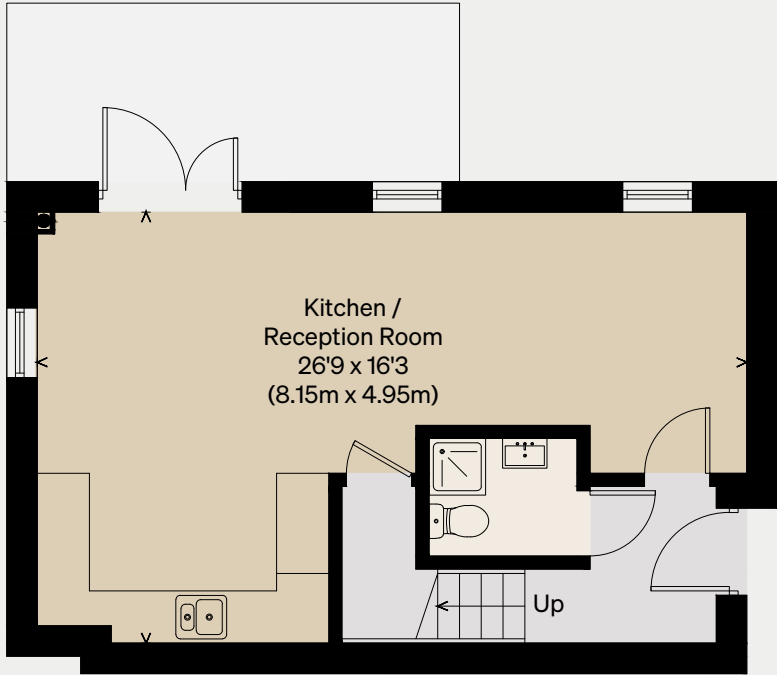
LONDON N18

Approximate Floor Area = 79.6 sq m / 857 sq ft

Illustration for identification purposes only,  
measurements are approximate, not to scale



FIRST FLOOR



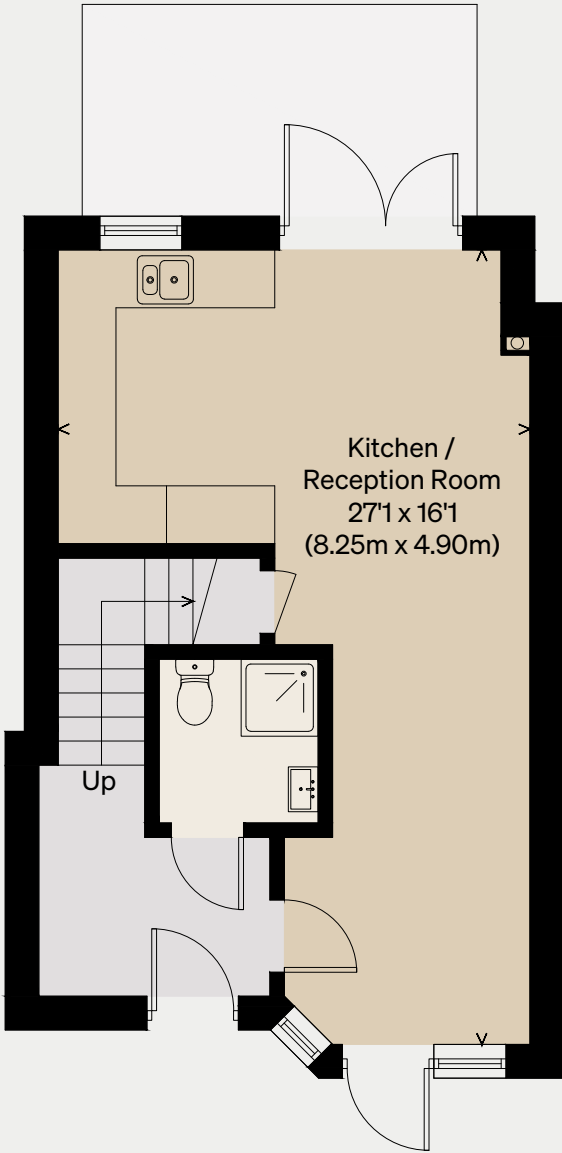
GROUND FLOOR

# Tamarind Mews

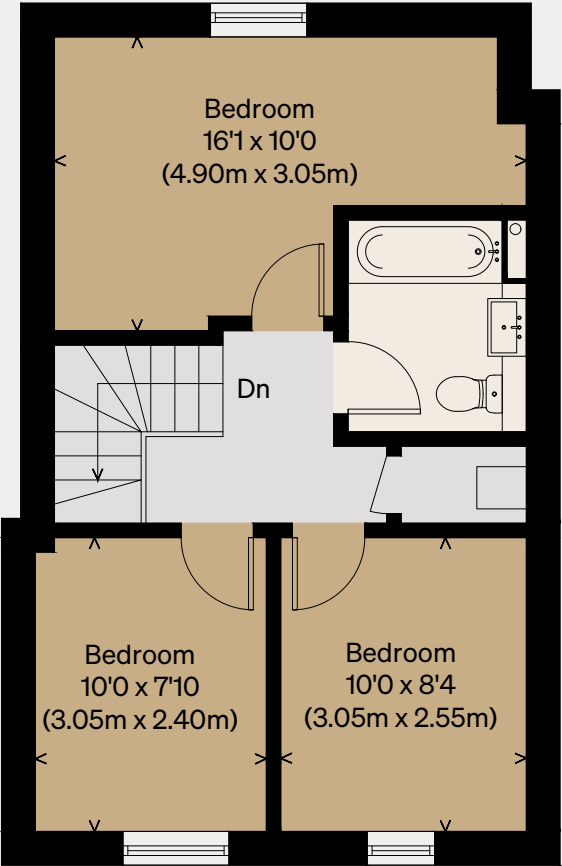
LONDON N18

Approximate Floor Area = 80.7 sq m / 869 sq ft

Illustration for identification purposes only,  
measurements are approximate, not to scale



GROUND FLOOR



FIRST FLOOR

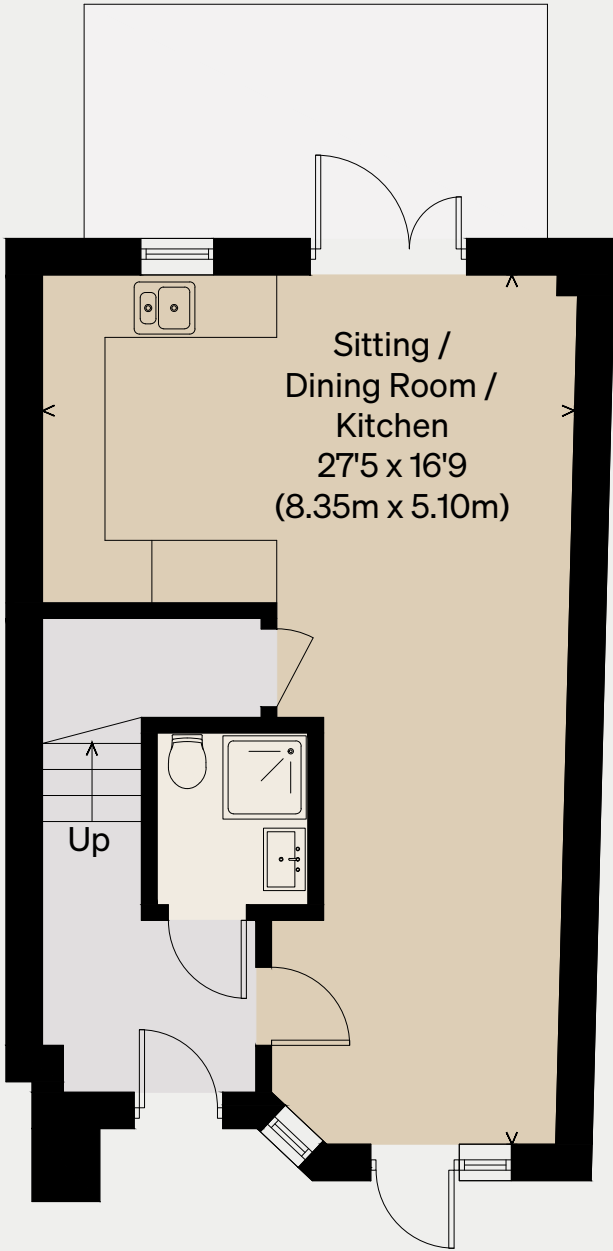
THE MODERN HOUSE

# Tamarind Mews

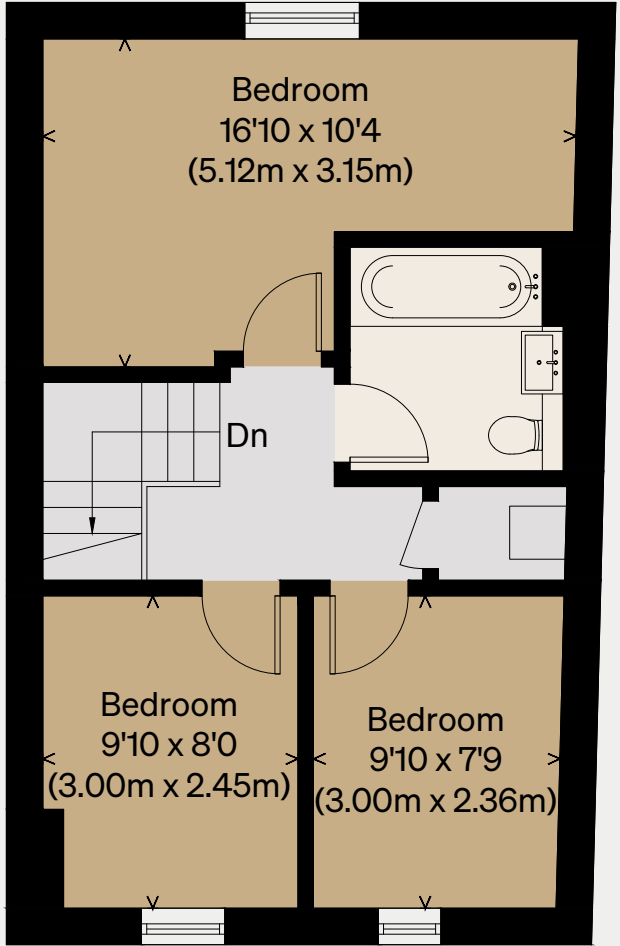
LONDON N18

Approximate Floor Area = 82.1 sq m / 884 sq ft

Illustration for identification purposes only,  
measurements are approximate, not to scale



GROUND FLOOR



FIRST FLOOR