

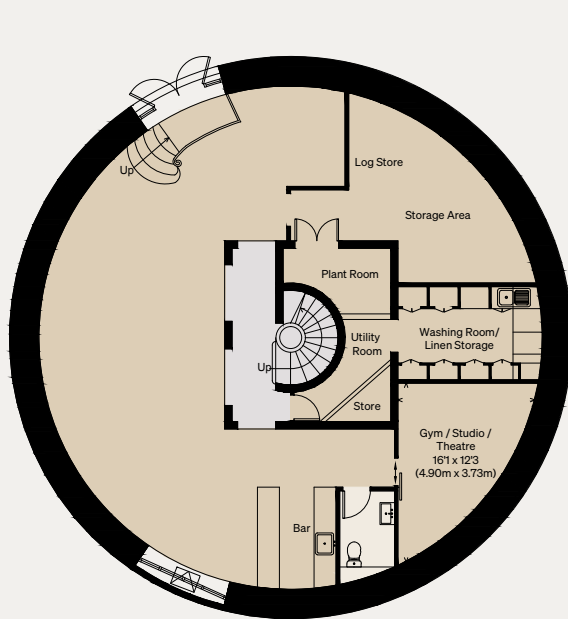
THE MODERN HOUSE

Approximate Floor Area = 447.9 sq m / 4821 sq ft
Mezzanine = 15.8 sq m / 170 sq ft
Total = 463.7 sq m / 4991 sq ft

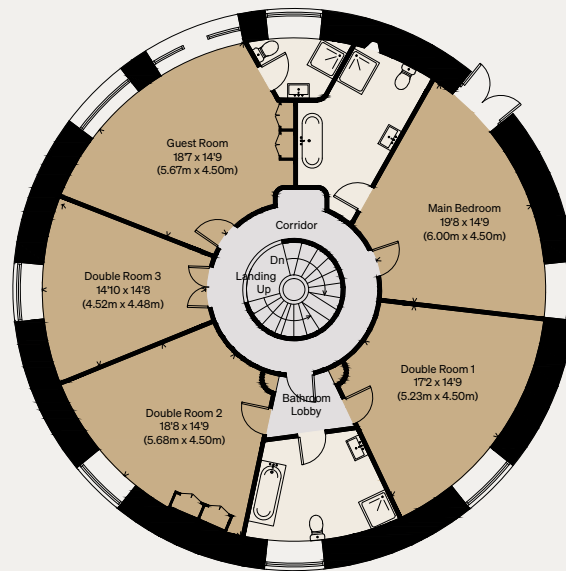
The Roundhouse

OLD KNEBWORTH, HERTFORDSHIRE

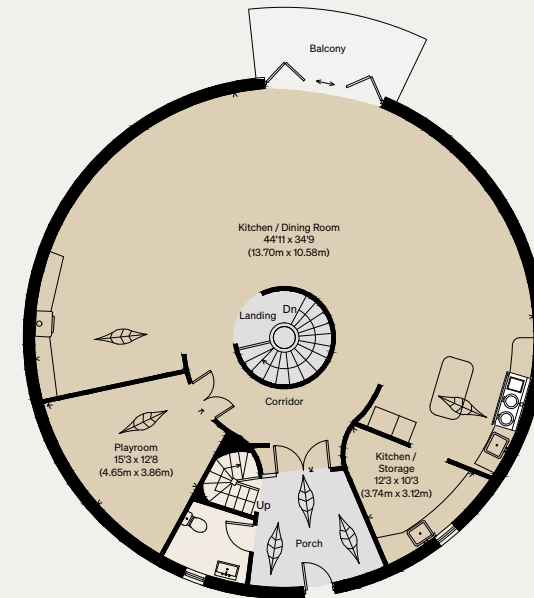
Illustration for identification purposes only,
measurements are approximate, not to scale



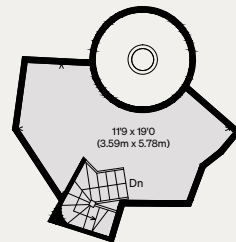
BASEMENT



GROUND FLOOR



FIRST FLOOR



MEZZANINE