

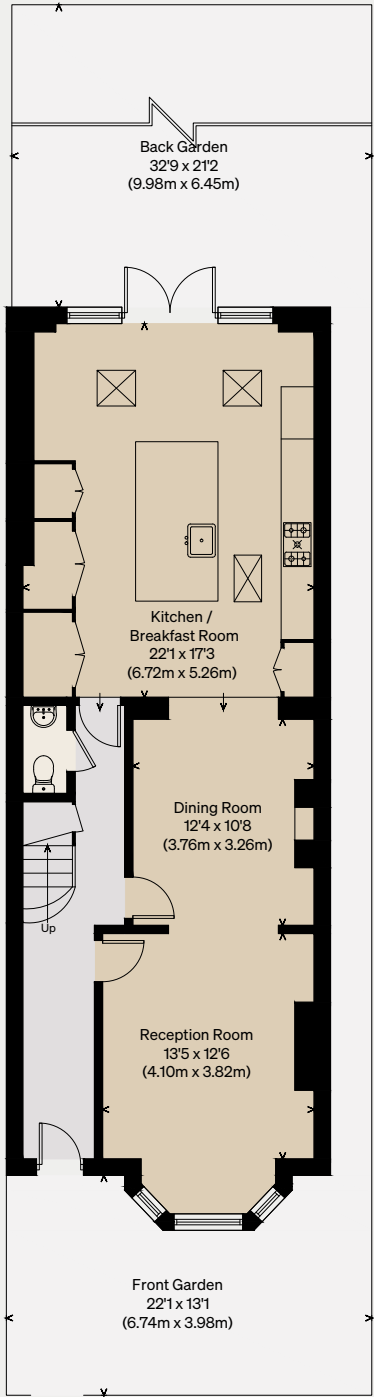
THE MODERN HOUSE

# Frithville Gardens III

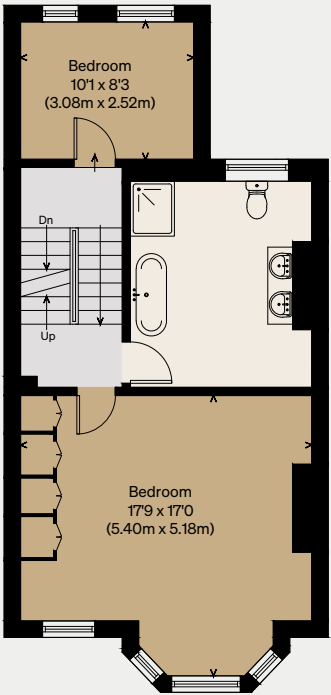
LONDON W12

Approximate Floor Area = 213.31 sq m / 2296 sq ft  
Eaves Storage = 5.38 m / 58 sq ft  
Total = 218.69 sq m / 2354 sq ft

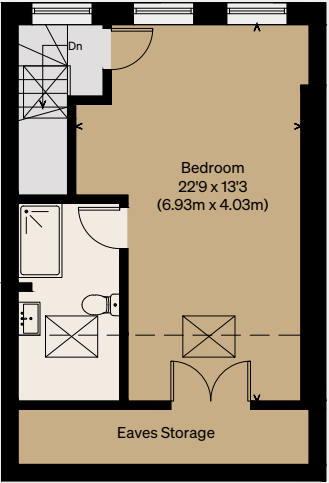
Illustration for identification purposes only,  
measurements are approximate, not to scale



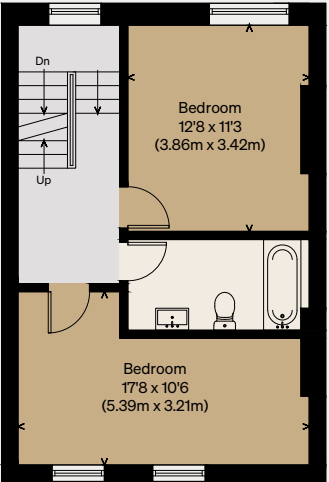
GROUND FLOOR



FIRST FLOOR



THIRD FLOOR



SECOND FLOOR

