

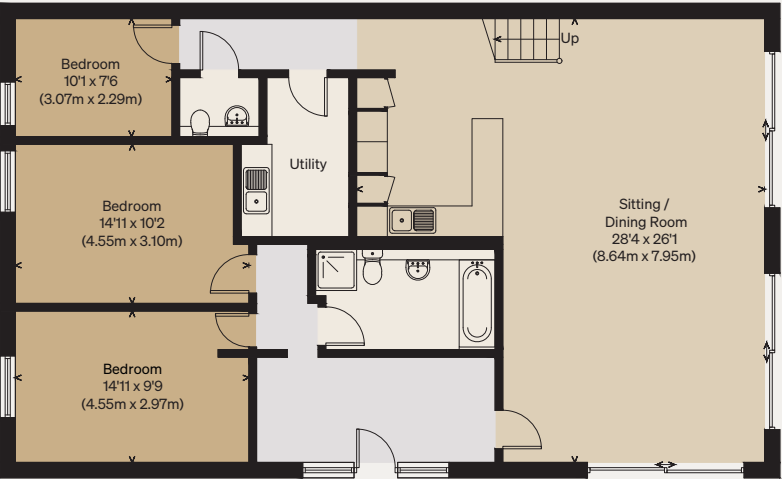
THE MODERN HOUSE

Westside Barn

KIRBY ROW, NORFOLK

Approximate Floor Area = 200.6 sq m / 2159 sq ft
Garage = 27.6 sq m / 297 sq ft
Total = 228.2 sq m / 2456 sq ft (Excluding Void)

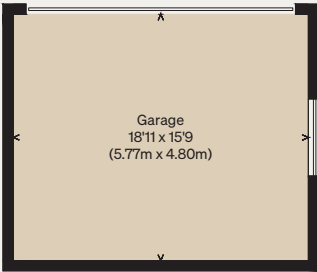
Illustration for identification purposes only,
measurements are approximate, not to scale



GROUND FLOOR



FIRST FLOOR



(Not Shown In Actual Location / Orientation)