

THE MODERN HOUSE

Approximate Floor Area = 97.7 sq m / 1052 sq ft (Excluding Reduced Headroom)

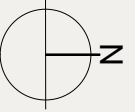
Reduced Headroom = 2.7 sq m / 29 sq ft


Total = 100.4 sq m / 1081 sq ft

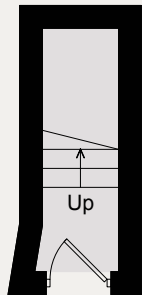
Martell Road

LONDON SE21

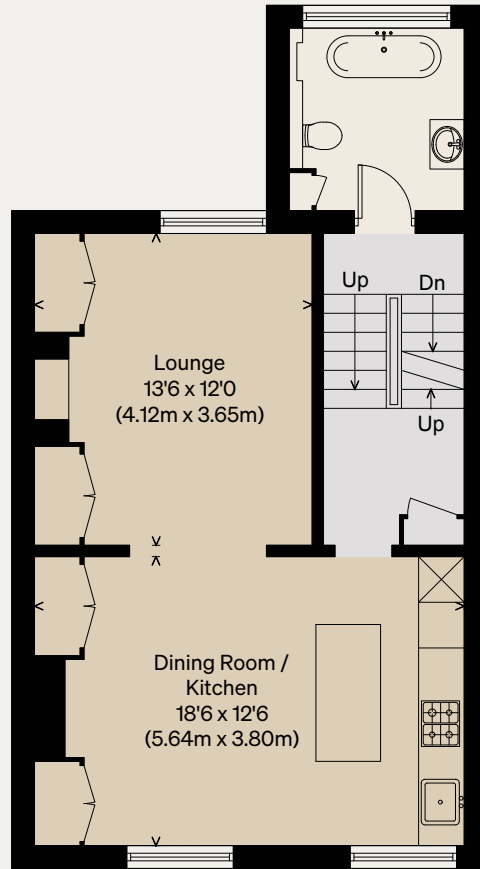
Illustration for identification purposes only,
measurements are approximate, not to scale



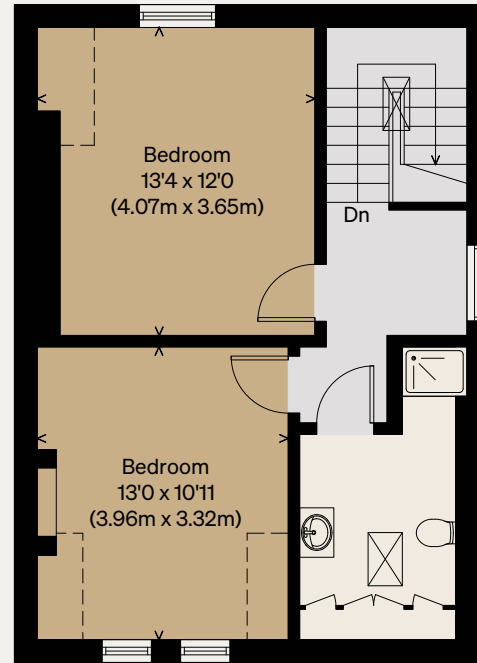
 = Reduced headroom below 1.5m / 5'0"



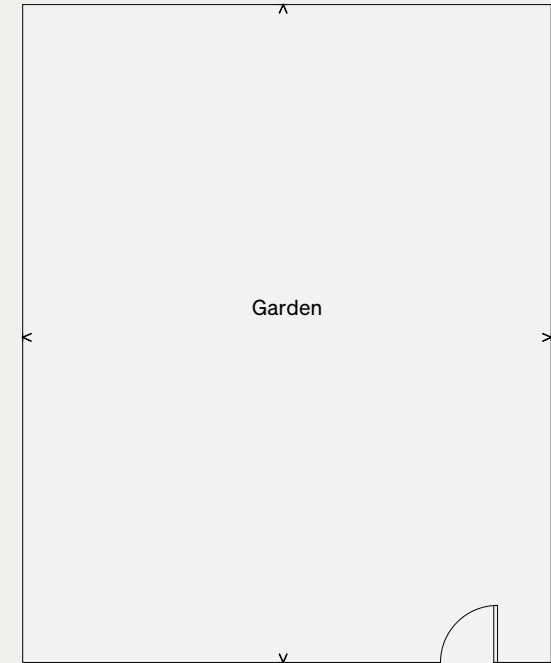
GROUND FLOOR



FIRST FLOOR



SECOND FLOOR



Garden