

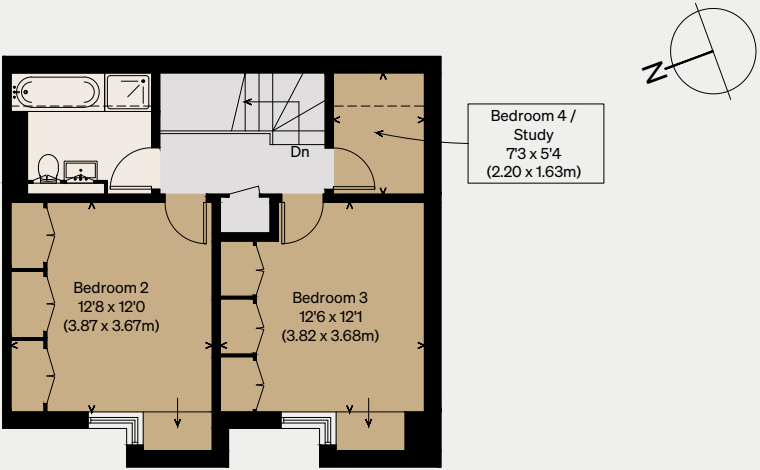
THE MODERN HOUSE

Fitzjohns Avenue

LONDON NW3

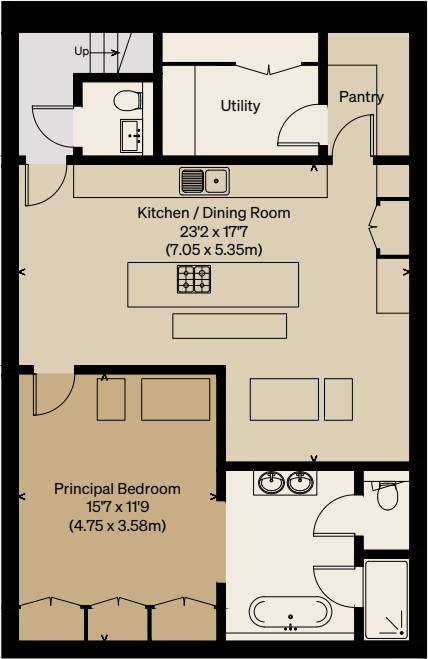
Approximate Floor Area = 171.1 sq m / 1842 sq ft

Illustration for identification purposes only,  
measurements are approximate, not to scale

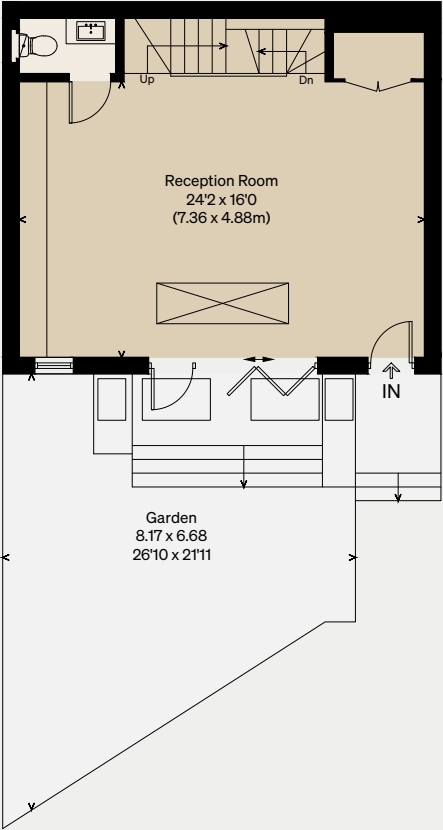


FIRST FLOOR

[Symbol] = Reduced head height below 1.5m



LOWER GROUND FLOOR



GROUND FLOOR