

Osborne Road

LONDON E7

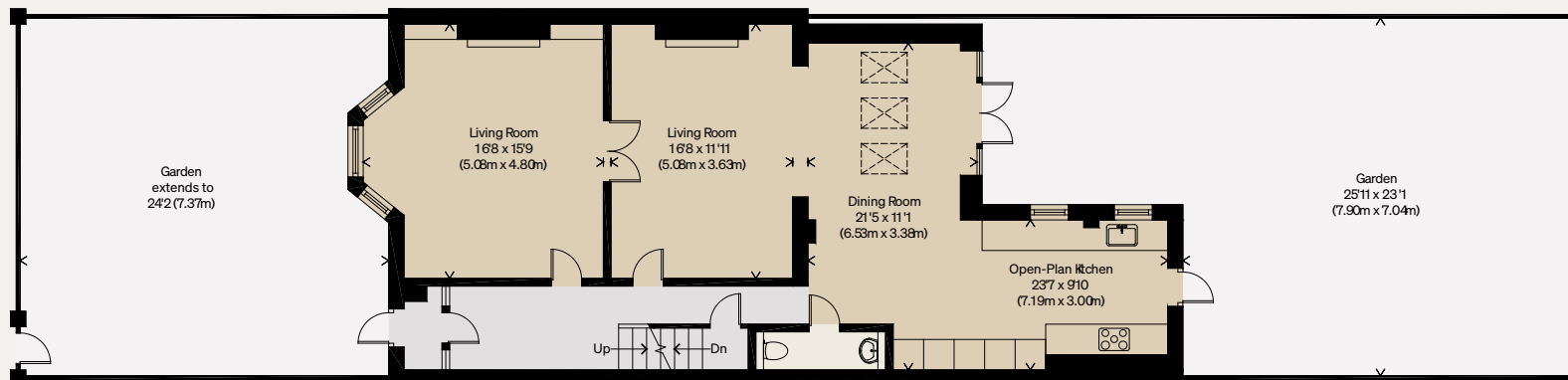
Approximate Gross Internal Floor Area : 1731 sq ft / 160.8 sq m
Cellar = 138 sq ft / 12.8 sq m

Total = 1869 sq ft / 173.6 sq m

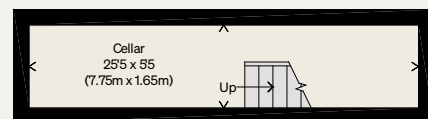
Illustration for identification purposes only, measurements are approximate, not to scale



First Floor



Ground Floor



Lower Ground Floor

