

THE MODERN HOUSE

High Kingsdown

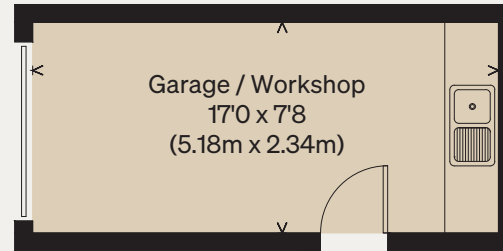
BRISTOL

Approximate Floor Area = 90.80 sq m / 977.70 sq ft

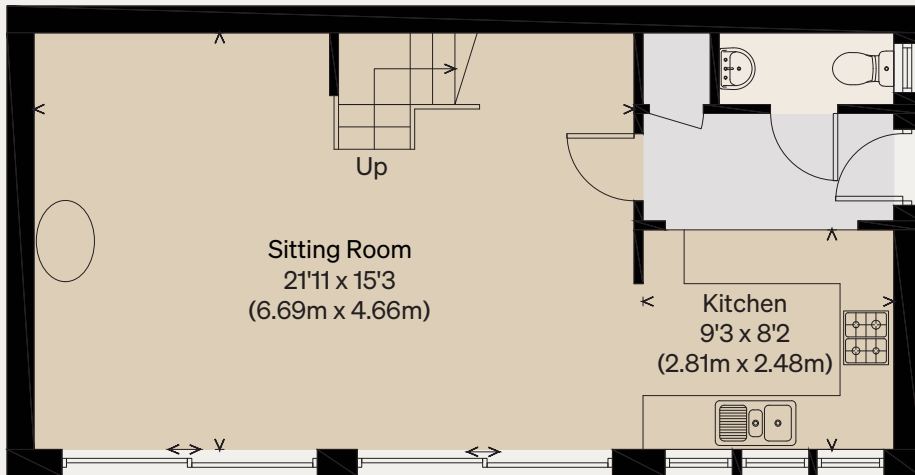
Garage Area = 12.20 sq m / 130.50 sq ft

Total = 103.0 sq m / 1108.20 sq ft

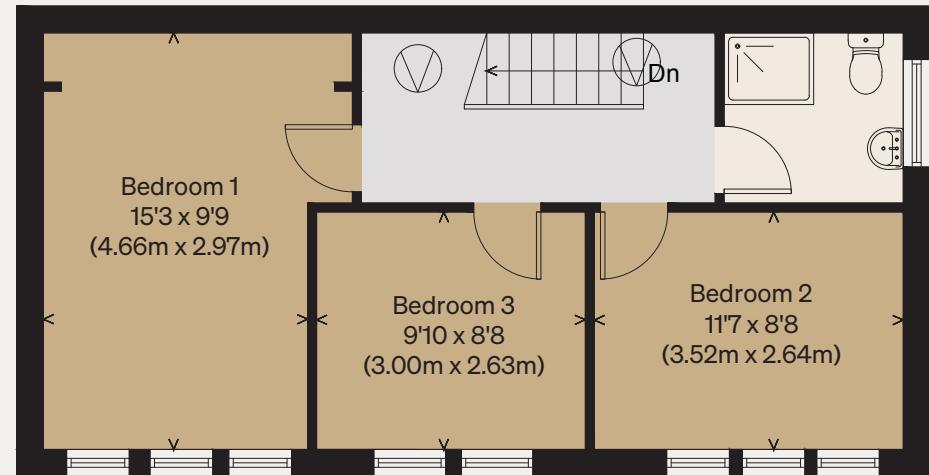
Illustration for identification purposes only,
measurements are approximate, not to scale



(Not Shown In Actual
Location / Orientation)



GROUND FLOOR



FIRST FLOOR