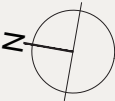



Walmer Yard I

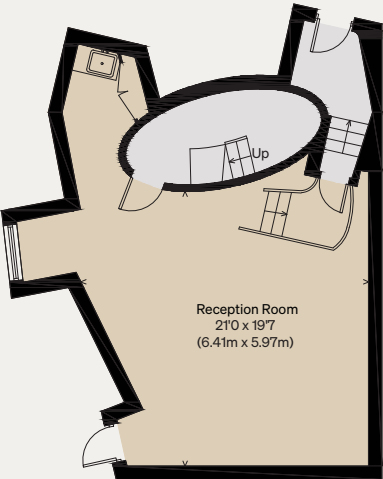
LONDON W11

Approximate Floor Area = 215.5 sq m / 2320 sq ft  
Including Limited Use Area (0.7 sq m / 7 sq ft)

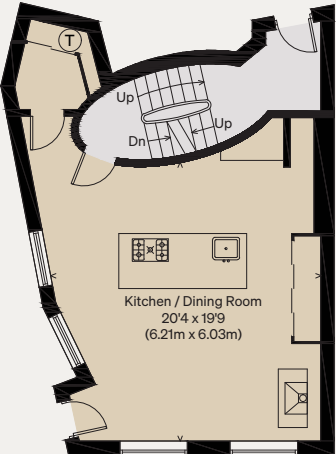
Illustration for identification purposes only,  
measurements are approximate, not to scale



 = Reduced head height below 1.5m



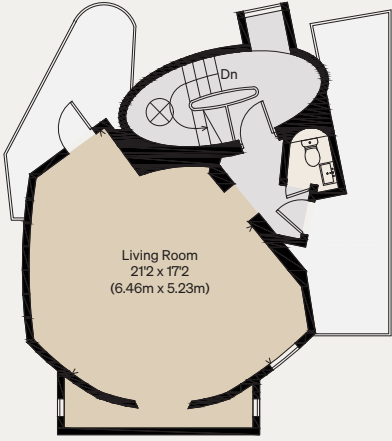
LOWER GROUND FLOOR



GROUND FLOOR



FIRST FLOOR



SECOND FLOOR