

Church Rise III

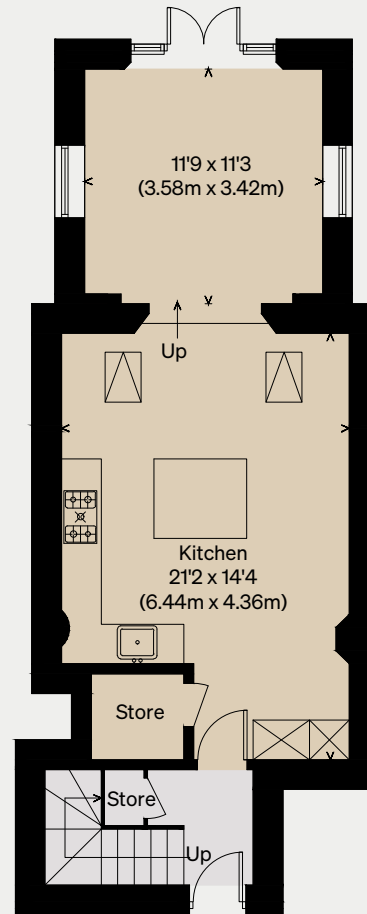
LONDON SE23

Approximate Floor Area = 112.8 sq m / 1214 sq ft (Excluding Reduced Head Height)

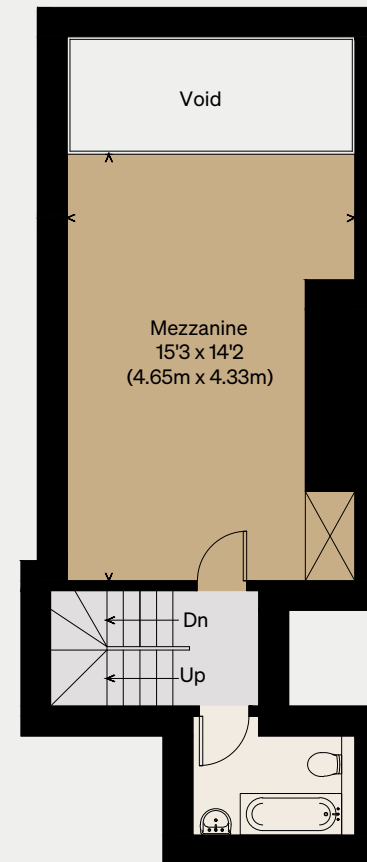
Reduced Head Height = 4.7 sq m / 50 sq ft

Total = 117.5 sq m / 1264 sq ft

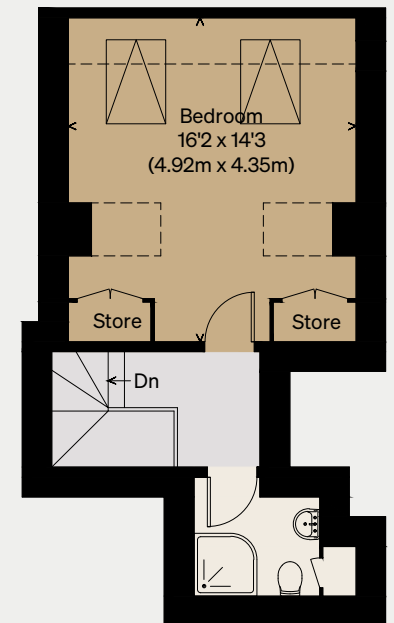
Illustration for identification purposes only, measurements are approximate, not to scale



GROUND FLOOR



MEZZANINE



SECOND FLOOR