

INIGO

PROPERTY NAME

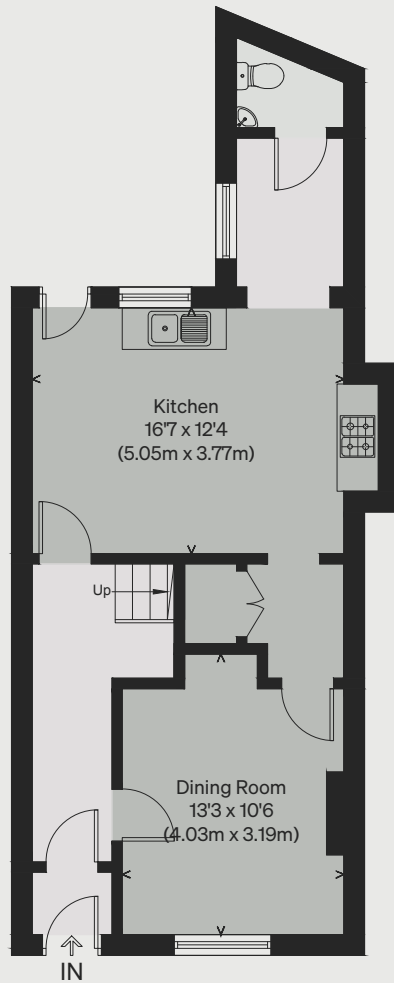
Pound Street

LOCATION

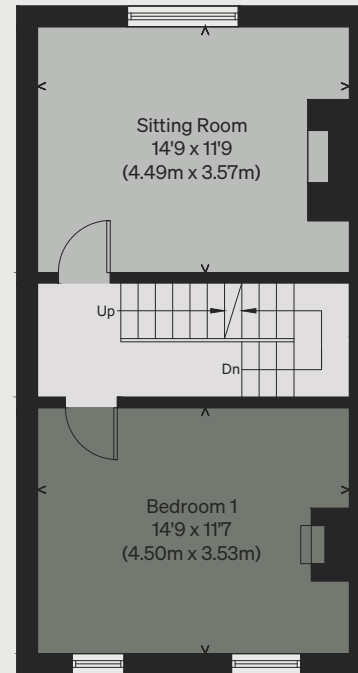
Lyme Regis, Dorset

Approximate Floor Area = 163.6 sq m / 1762 sq ft

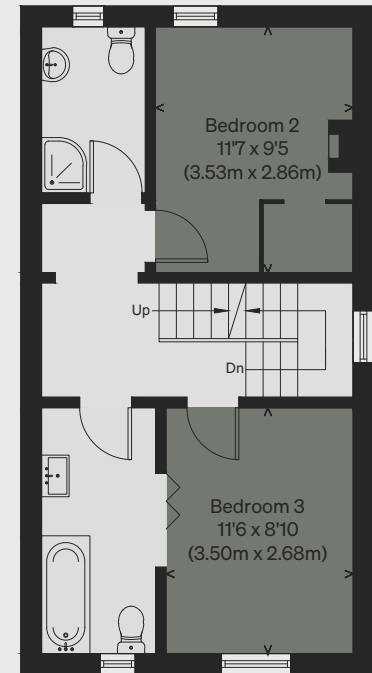
*Illustration for identification purposes only,
measurements are approximate, not to scale*



GROUND FLOOR



FIRST FLOOR



SECOND FLOOR

THIRD FLOOR

