

THE MODERN HOUSE

Hawkswell House

EXTON, RUTLAND

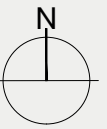
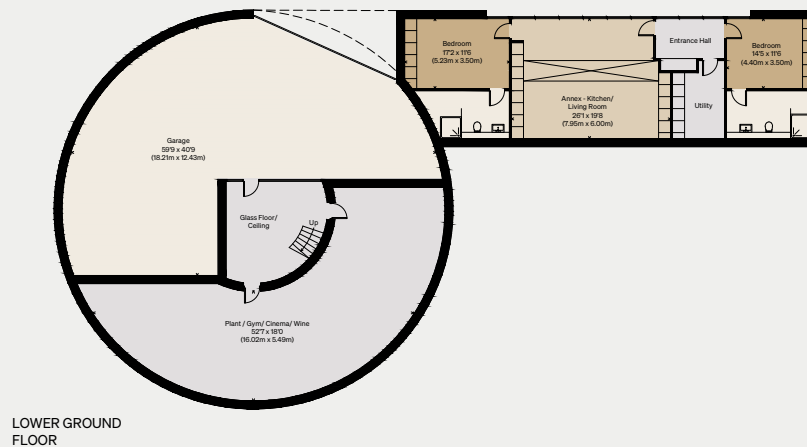
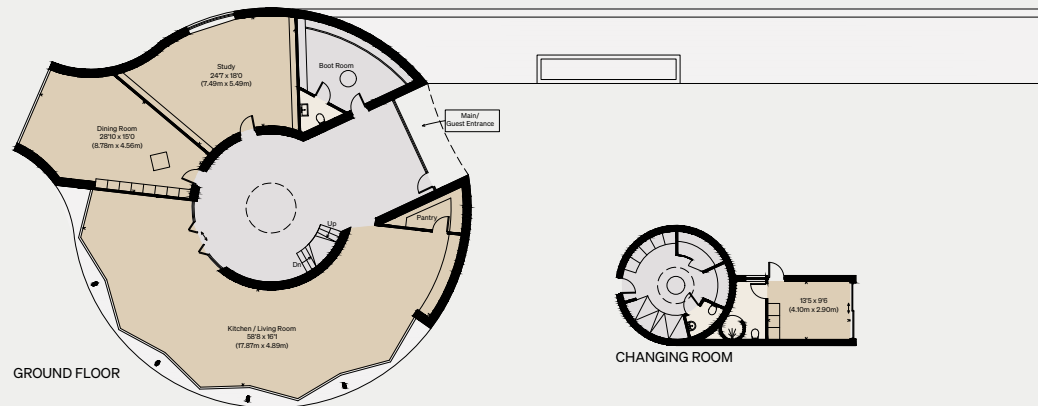
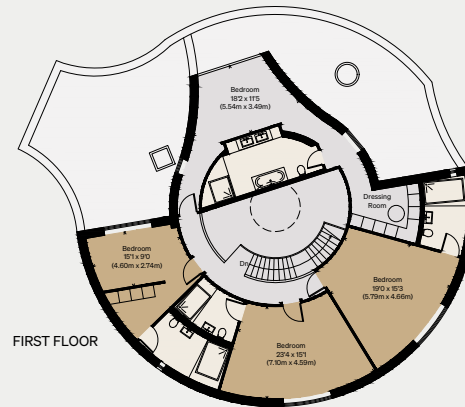
Approximate Floor Area = 731.6 sq m / 7875 sq ft (Including Basement, Excluding Garage)

Changing Room = 40.0 sq m / 430 sq ft

Garage = 147.4 sq m / 1587 sq ft

Total = 918.8 sq m / 9892 sq ft

Illustration for identification purposes only,
measurements are approximate, not to scale



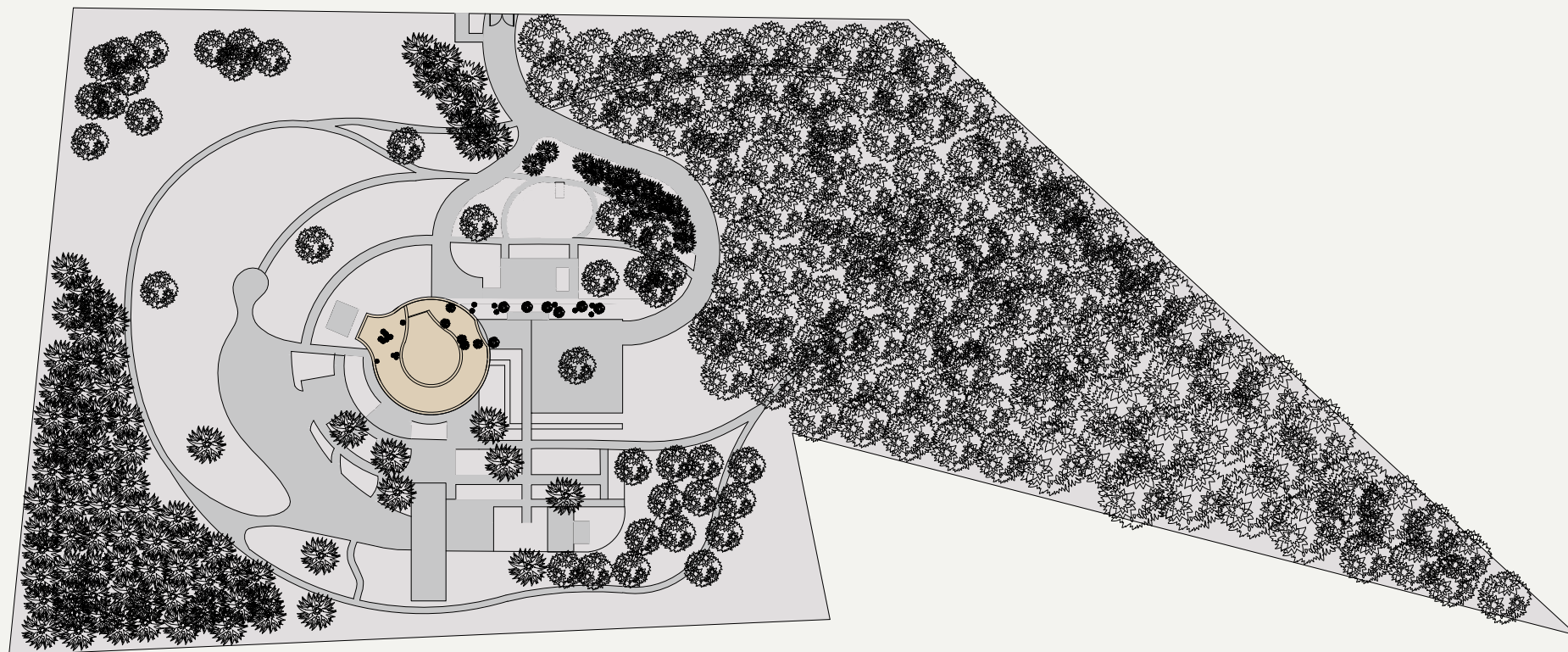
THE MODERN HOUSE

Site Plan

Hawkswell House

EXTON, RUTLAND

Illustration for identification purposes only,
measurements are approximate, not to scale





E A S T E L E V A T I O N

MATERIAL LEGEND

- 1. ANCASTER 'HARD WHITE' ASHLAR LIMESTONE
- 2. ANCASTER 'HARD WHITE' TUMBLED STONE
- 3. ALUMINUM FRAMED GLAZING
- 4. TIMBER DOOR/CLADDING - VERTICAL PLANK



S O U T H E L E V A T I O N

MATERIAL LEGEND

- 1. ANCASTER 'HARD WHITE' ASHLAR LIMESTONE
- 2. ANCASTER 'HARD WHITE' TUMBLED STONE
- 3. ALUMINUM FRAMED GLAZING
- 4. TIMBER DOOR - VERTICAL PLANK



W E S T E L E V A T I O N

- MATERIAL LEGEND**
1. ANCASTER 'HARD WHITE' ASHLAR LIMESTONE
2. ANCASTER 'HARD WHITE' TUMBLED STONE
3. ALUMINUM FRAMED GLAZING
4. TIMBER DOOR/CLADDING - VERTICAL PLANK



N O R T H E L E V A T I O N

- MATERIAL LEGEND**
1. - ANCASTER 'HARD WHITE' ASHLAR LIMESTONE
2. - ANCASTER 'HARD WHITE' TUMBLED STONE
3. - ALUMINUM-FRAMED GLAZING
4. - TIMBER DOOR - VERTICAL PLANK