

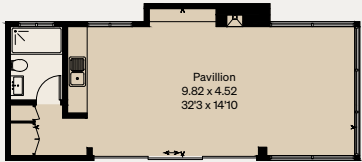
THE MODERN HOUSE

Reighton Wood

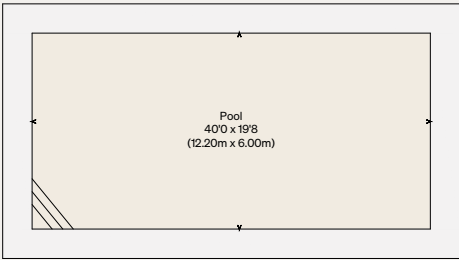
TENTERDEN, KENT

Approximate Floor Area = 362.0 sq m / 3896 sq ft  
Garaging / Recreation Rooms = 114.8 sq m / 1235 sq ft  
Outbuildings (Excluding Car Barn) = 43.6 sq m / 469 sq ft  
Total = 520.4 sq m / 5600 sq ft

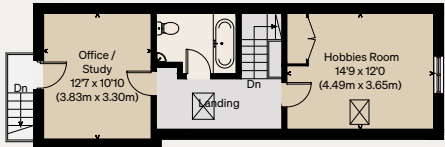
Illustration for identification purposes only,  
measurements are approximate, not to scale



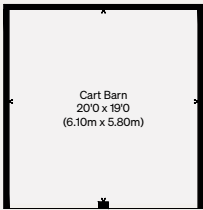
POOL Pavilion  
(Not Shown In Actual Location / Orientation)



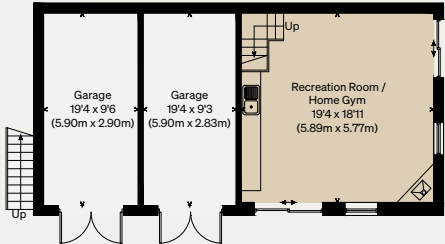
(Not Shown In Actual Location / Orientation)



GARAGING / RECREATION ROOMS - FIRST FLOOR



(Not Shown In Actual Location / Orientation)  
CAR BARN



GARAGING / RECREATION ROOMS - GROUND FLOOR  
(Not Shown In Actual Location / Orientation)

OUTBUILDINGS

