

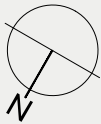
THE MODERN HOUSE

Wolseley Road

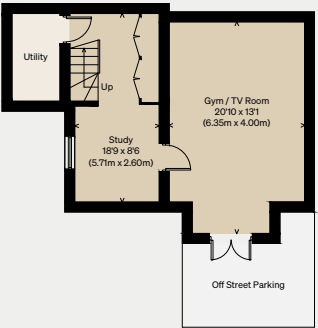
LONDON N8

Approximate Floor Area = 296.3 sq m / 3187 sq ft

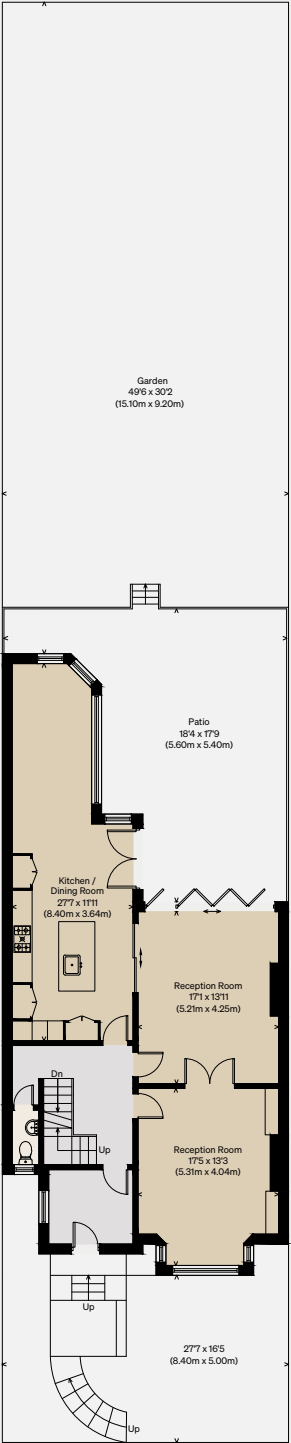
Illustration for identification purposes only,
measurements are approximate, not to scale



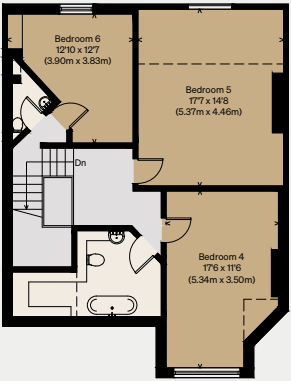
□ = Reduced head height below 1.5m



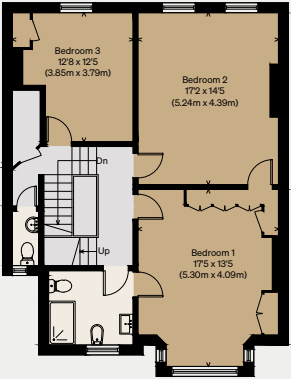
GROUND / STREET LEVEL



RAISED GROUND FLOOR



SECOND FLOOR



FIRST FLOOR