

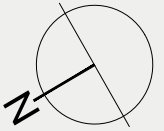
THE MODERN HOUSE


Camden Mews V

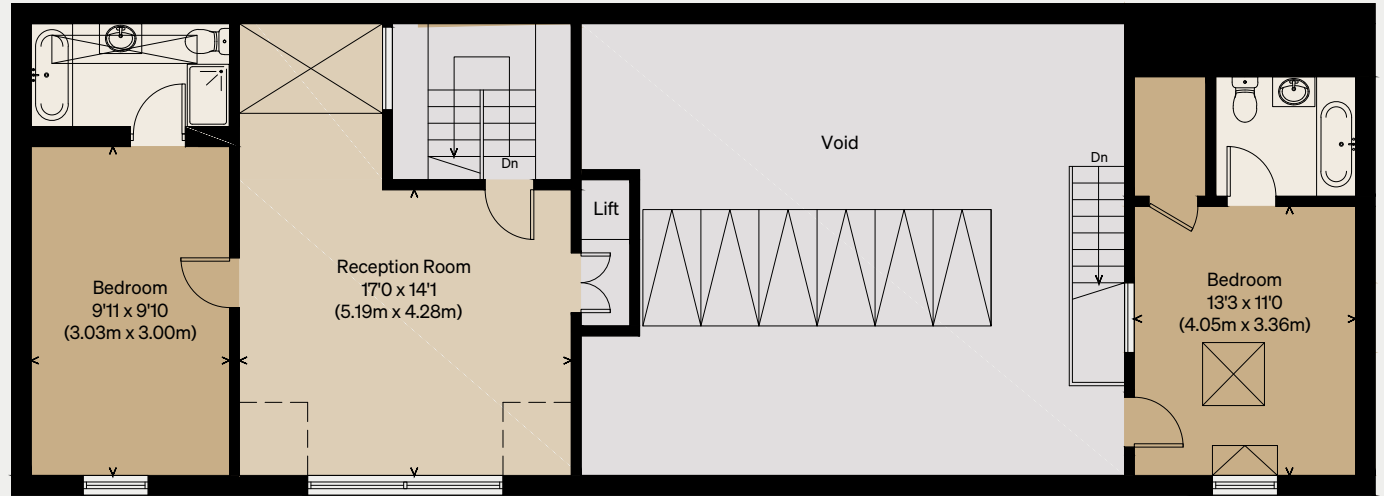
LONDON NW1

Approximate Floor Area = 243.1 sq m / 2617 sq ft
Outbuildings = 18.6 sq m / 200 sq ft
Total = 261.7 sq m / 2817 sq ft (including garage and reduced head height)

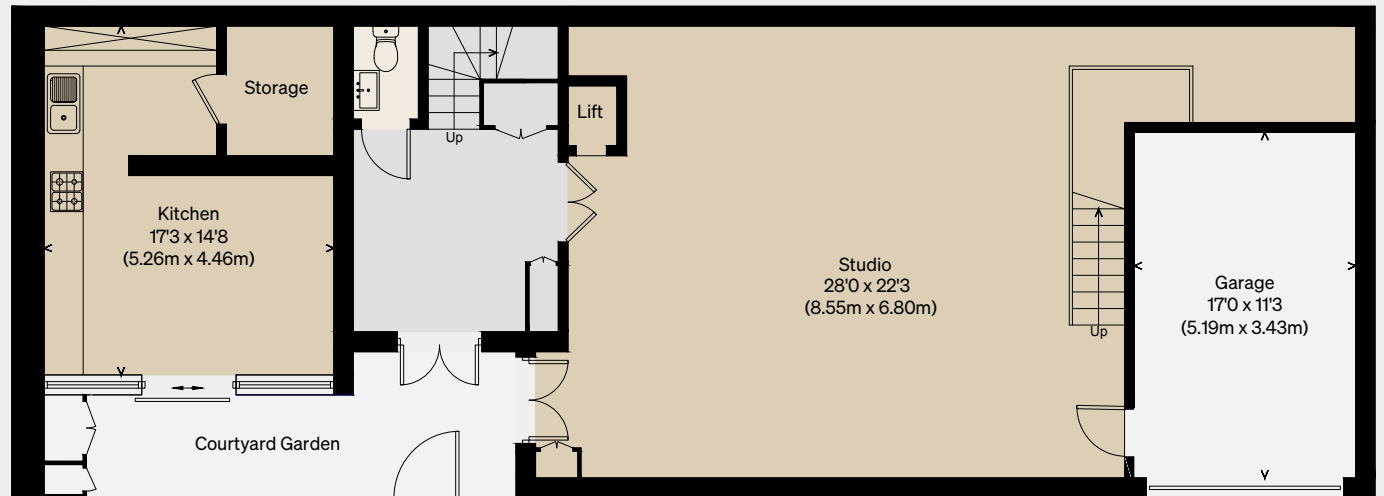
Illustration for identification purposes only,
measurements are approximate, not to scale.



 = Reduced Headroom Below 1.5m / 5'0



FIRST FLOOR



GROUND FLOOR