

THE MODERN HOUSE

# Haslemere Road

LONDON N8

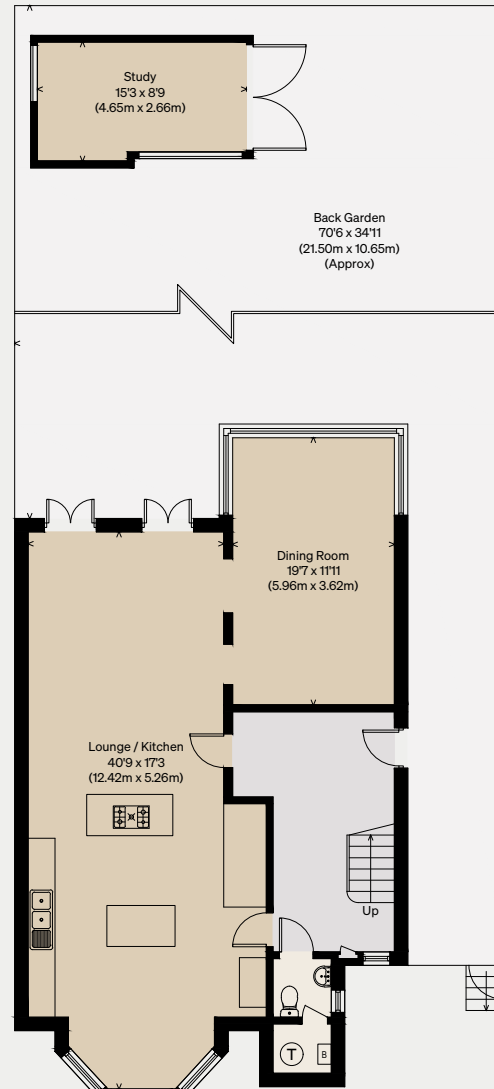
Approximate Floor Area = 319.0 sq m / 3434 sq ft

Study = 11.8 sq m / 127 sq ft

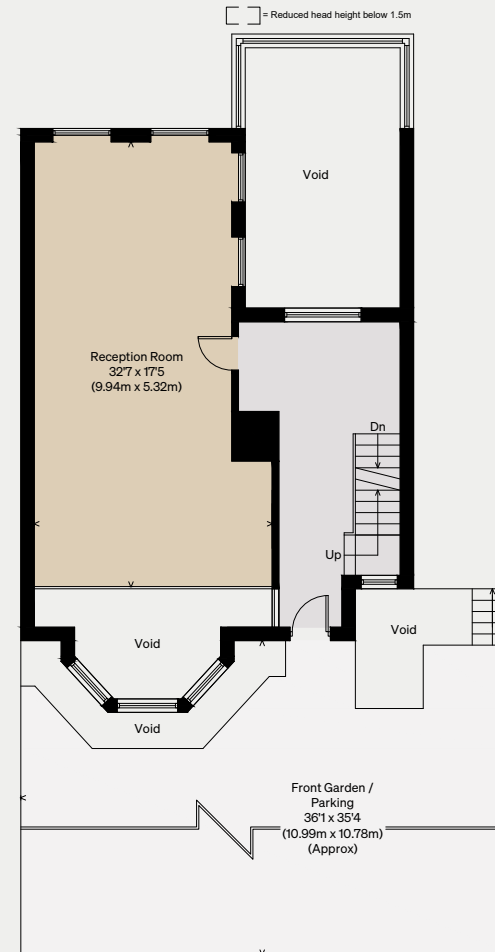
Total = 330.8 sq m / 3561 sq ft

(Excluding Void)

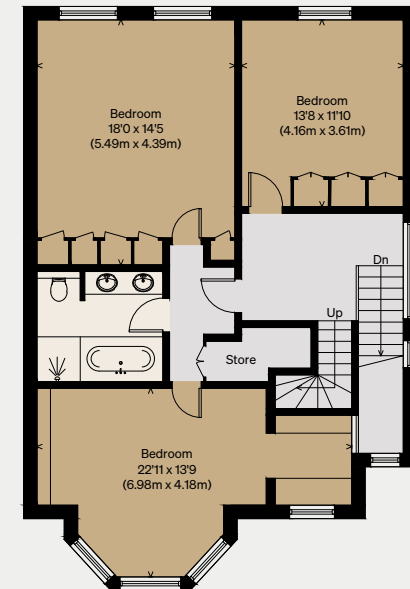
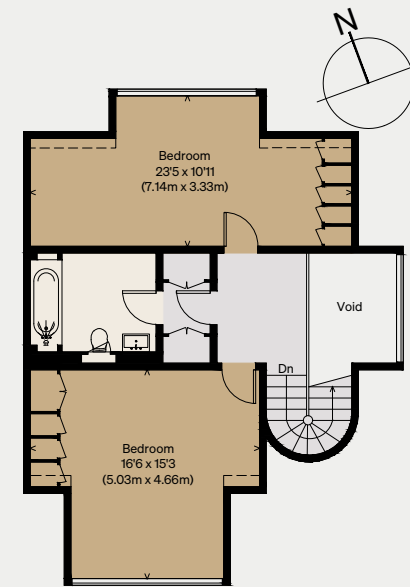
Illustration for identification purposes only,  
measurements are approximate, not to scale



LOWER GROUND FLOOR



GROUND FLOOR



FIRST FLOOR

