

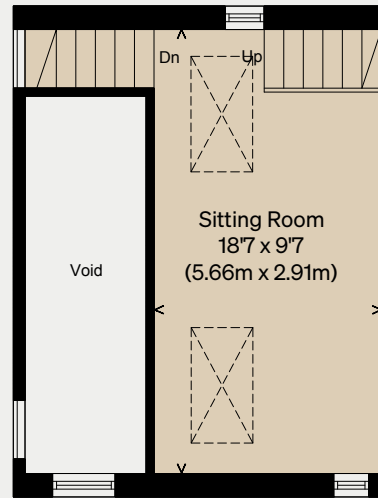
Skyline

AMBROSDEN, OXFORDSHIRE

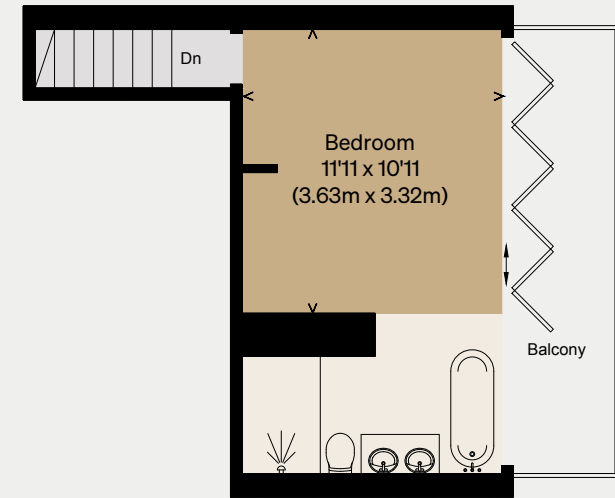
Approximate Floor Area = 91.3 sq m / 983 sq ft
Mezzanines = 24.7 sq m / 266 sq ft

Total = 116.0 sq m / 1249 sq ft (Excluding Voids)

Illustration for identification purposes only,
measurements are approximate, not to scale



MEZZANINE



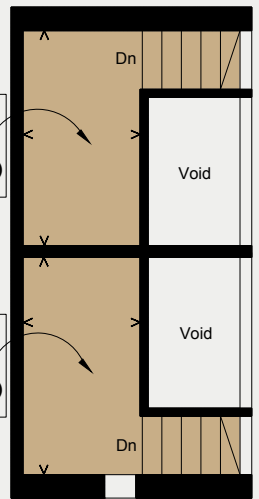
FIRST FLOOR



GROUND FLOOR

Sleeping Platform
9'1 x 4'10
(2.76m x 1.48m)

Sleeping Platform
8'10 x 5'1
(2.68m x 1.55m)



MEZZANINE