

THE MODERN HOUSE

Church Walk

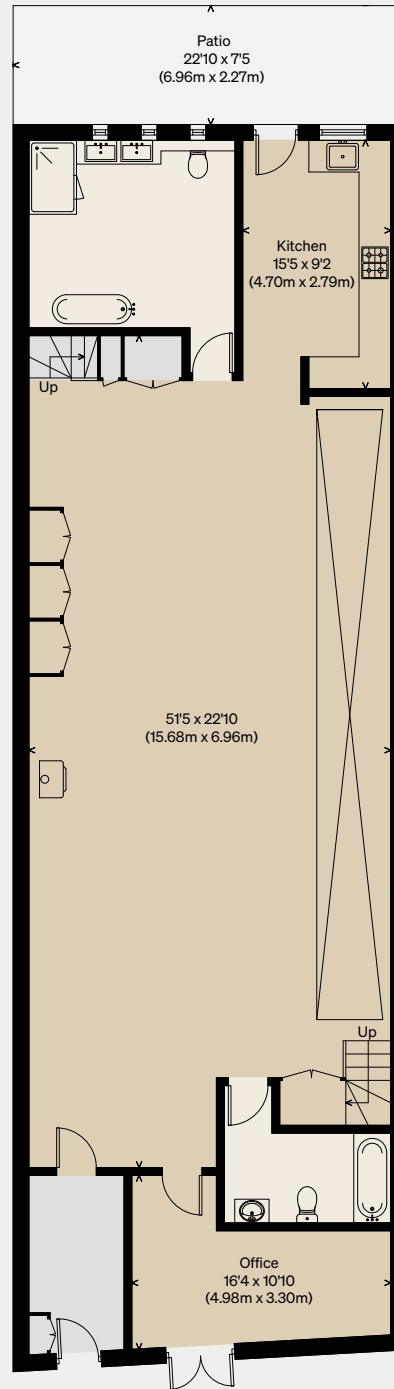
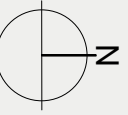
LONDON N16

Approximate Floor Area = 203.7 sq m / 2192 sq ft

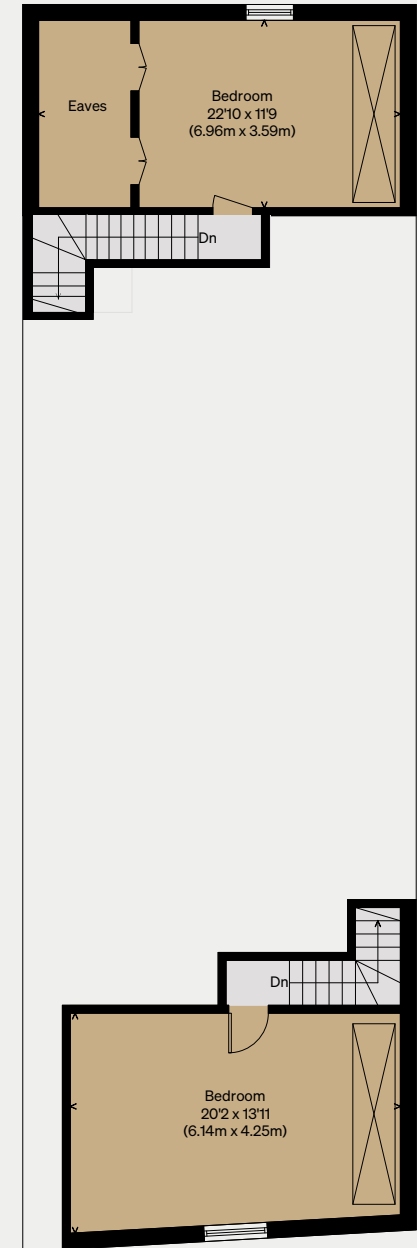
Eaves = 6.3 sq m / 68 sq ft

Total = 210.0 sq m / 2260 sq ft (Including Eaves)

Illustration for identification purposes only,
measurements are approximate, not to scale



GROUND FLOOR



MEZZANINE