

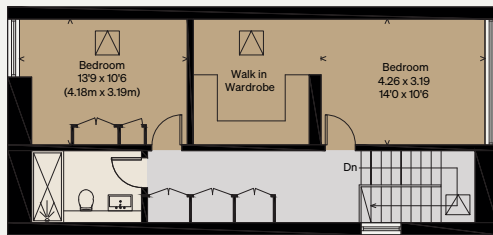
THE MODERN HOUSE

Walmer Road

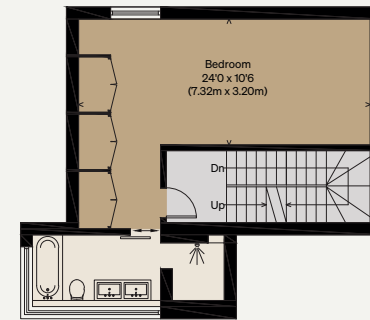
LONDON W11

Approximate Floor Area = 299.8 sq m / 3227 sq ft  
Storage = 8.5 sq m / 91 sq ft  
Total = 308.3 sq m / 3318 sq ft  
Including Limited Use Area (4.4 sq m / 47 sq ft)

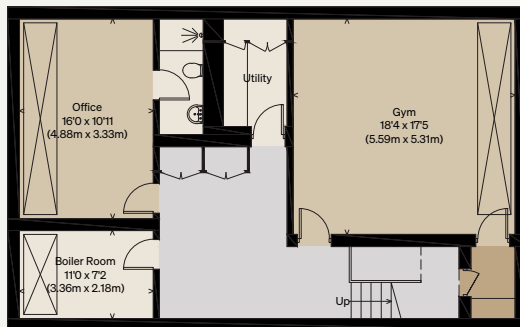
Illustration for identification purposes only,  
measurements are approximate, not to scale



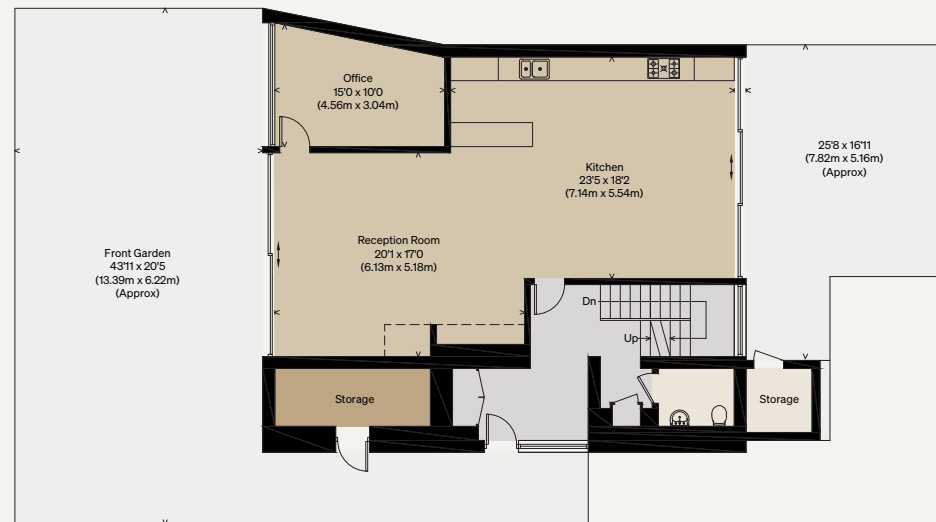
SECOND FLOOR



FIRST FLOOR



BASEMENT



GROUND FLOOR

