

THE MODERN HOUSE

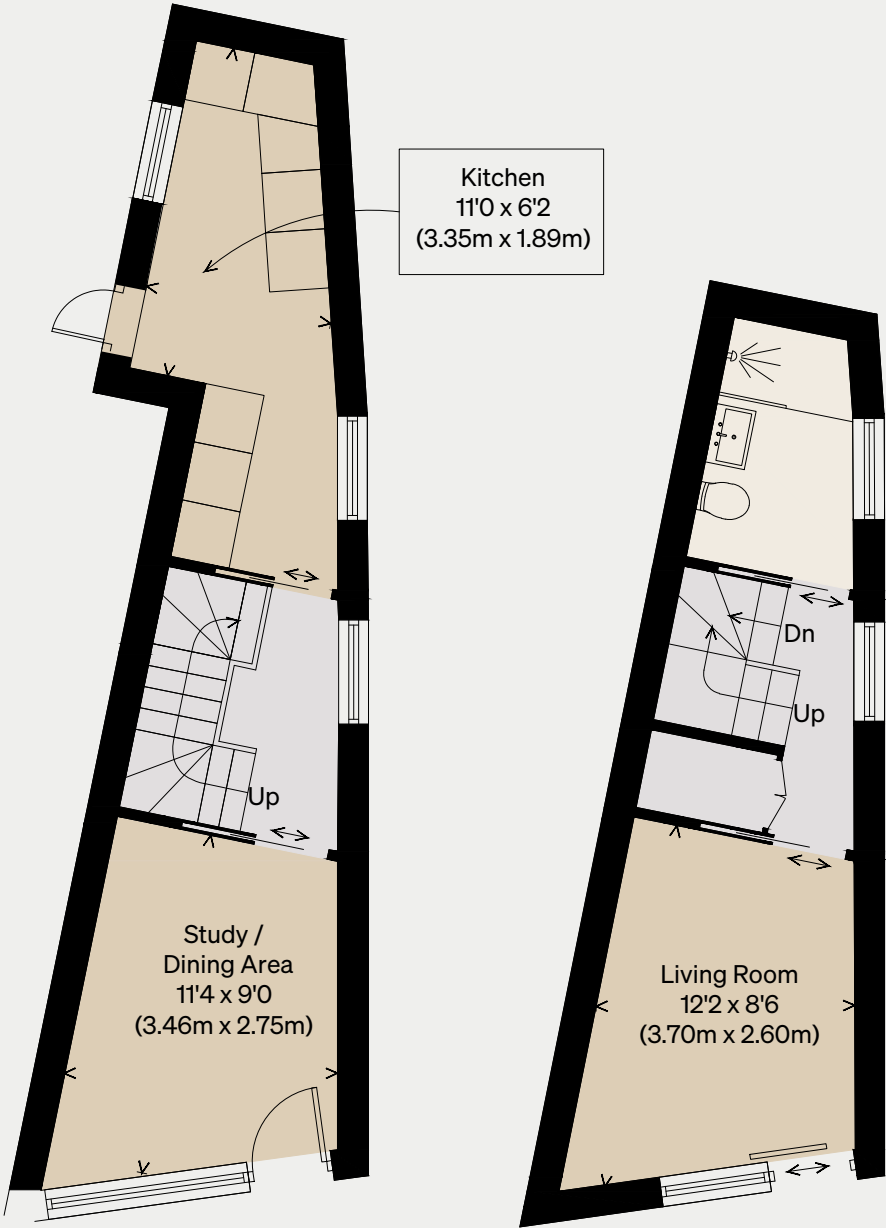
Wicklow Street

LONDON WC1X

Approximate Floor Area = 54.0 sq m / 581 sq ft
Terrace = 9 sq m / 97 sq ft

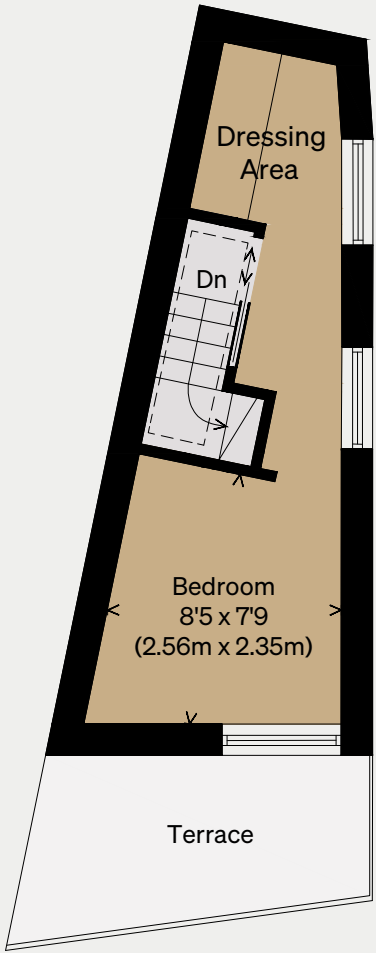
Illustration for identification purposes only,
measurements are approximate, not to scale

PROPOSED



GROUND FLOOR

FIRST FLOOR



SECOND FLOOR

THE MODERN HOUSE

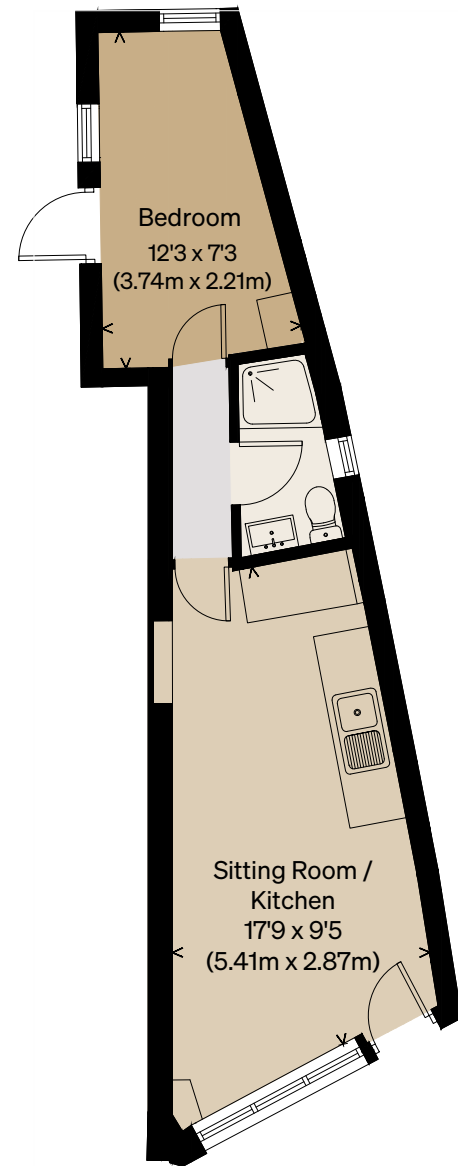
Wicklow Street

LONDON WC1X

Approximate Floor Area =25.4 sq m / 273 sq ft

Illustration for identification purposes only,
measurements are approximate, not to scale

EXISTING



GROUND FLOOR