

THE MODERN HOUSE

Helix Road

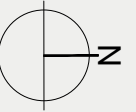
LONDON SW2

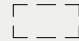
Approximate Floor Area = 53.6 sq m / 577 sq ft

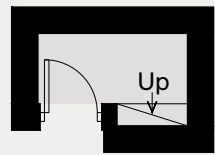
Reduced Headroom = 7.9 sq m / 85 sq ft

Total = 61.5 sq m / 662 sq ft

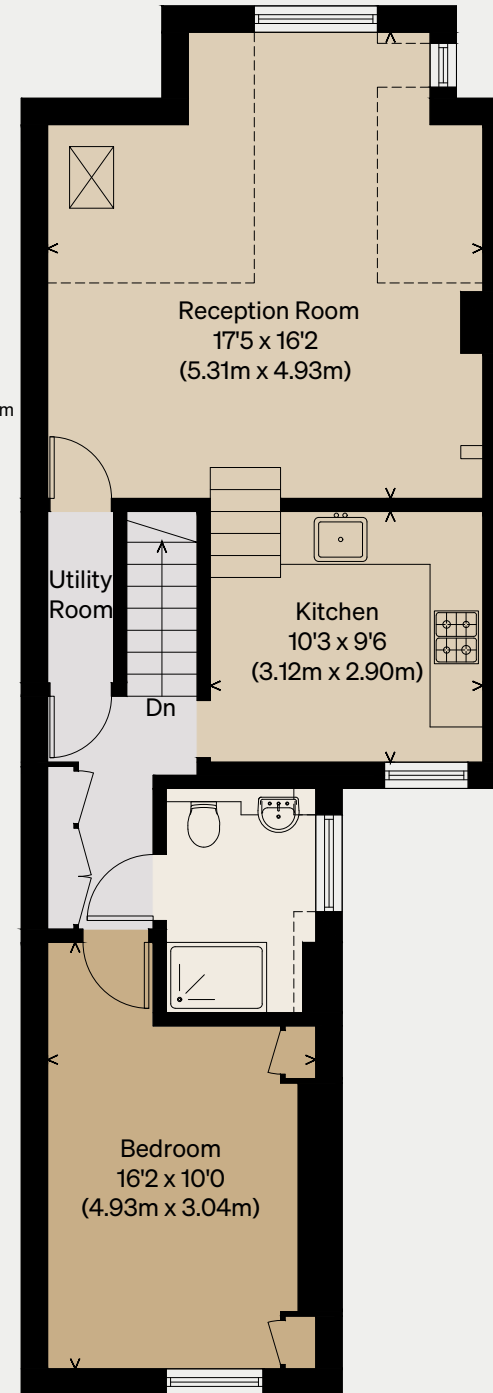
Illustration for identification purposes only,
measurements are approximate, not to scale



 = Reduced head height below 1.5m



GROUND FLOOR



FIRST FLOOR