

THE MODERN HOUSE

Geoffrey Road

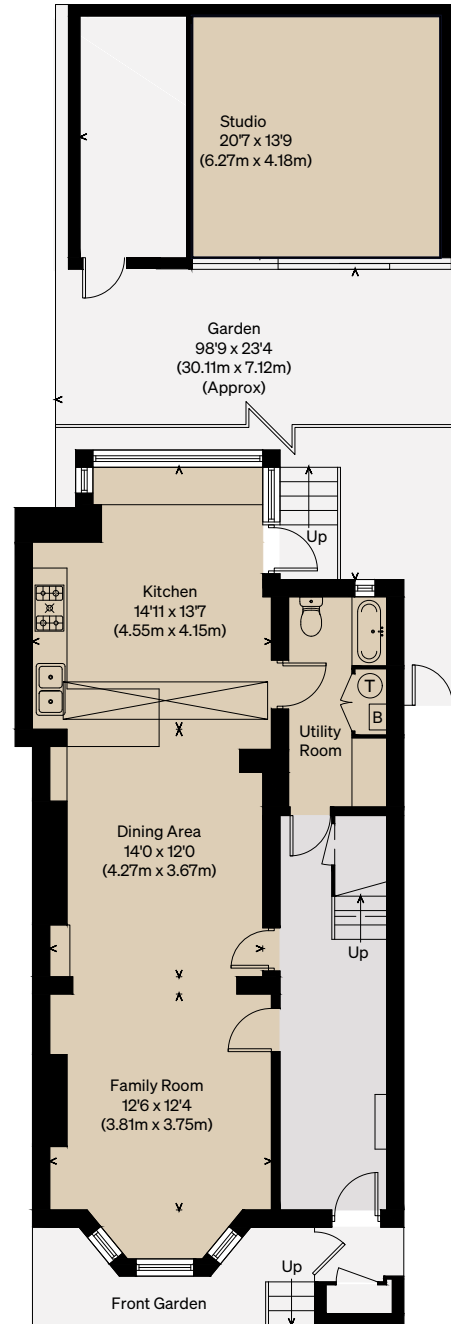
LONDON SE4

Approximate Floor Area = 209.7 sq m / 2257 sq ft

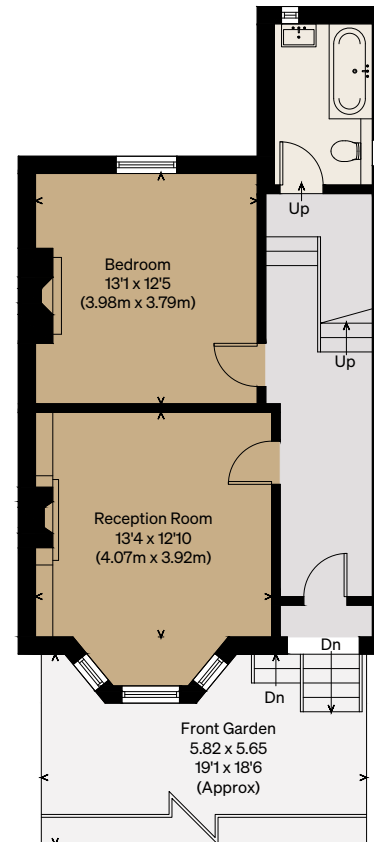
Shed = 26.2 sq m / 282 sq ft

Total = 235.9 sq m / 2539 sq ft

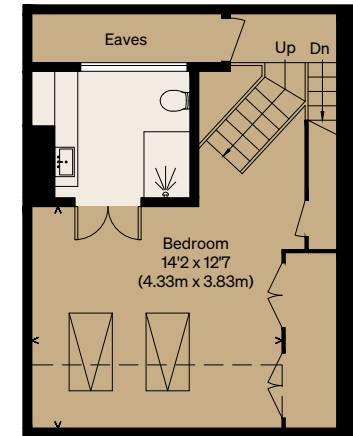
Illustration for identification purposes only,
measurements are approximate, not to scale



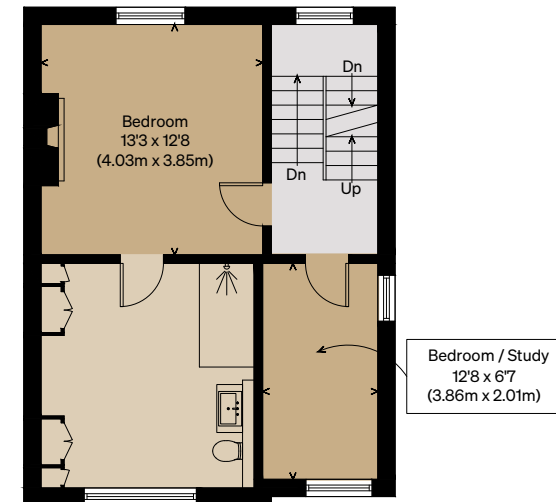
LOWER GROUND FLOOR




UPPER GROUND FLOOR



SECOND FLOOR



FIRST FLOOR

 = Reduced head height below 1.5m

