

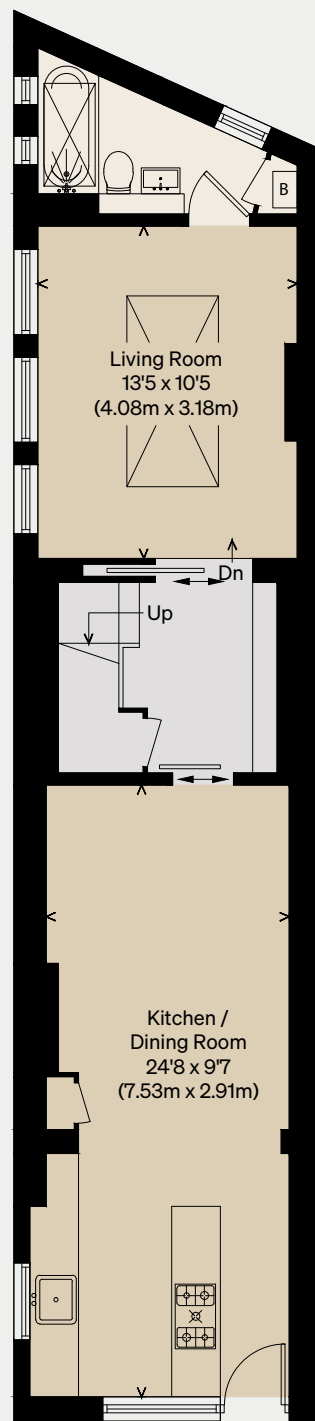
THE MODERN HOUSE

Oldfield Road III

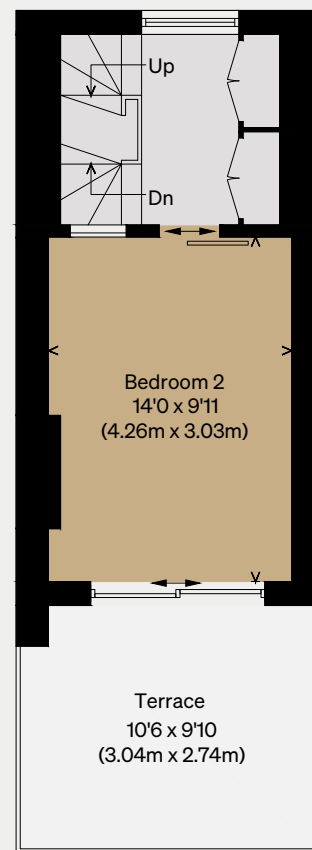
LONDON N16

Approximate Floor Area = 83.7 sq m / 901 sq ft

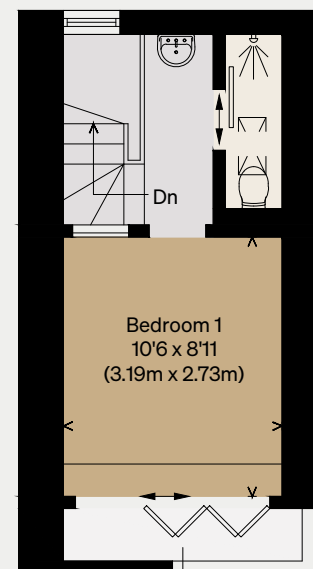
Illustration for identification purposes only,
measurements are approximate, not to scale



GROUND FLOOR



FIRST FLOOR



Balcony
9'1 x 1'9
(2.80m x 0.60m)

SECOND FLOOR

