

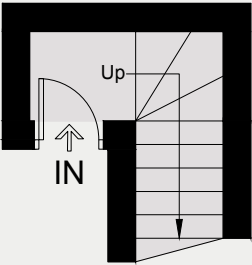
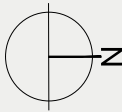
THE MODERN HOUSE

Great Portland Street

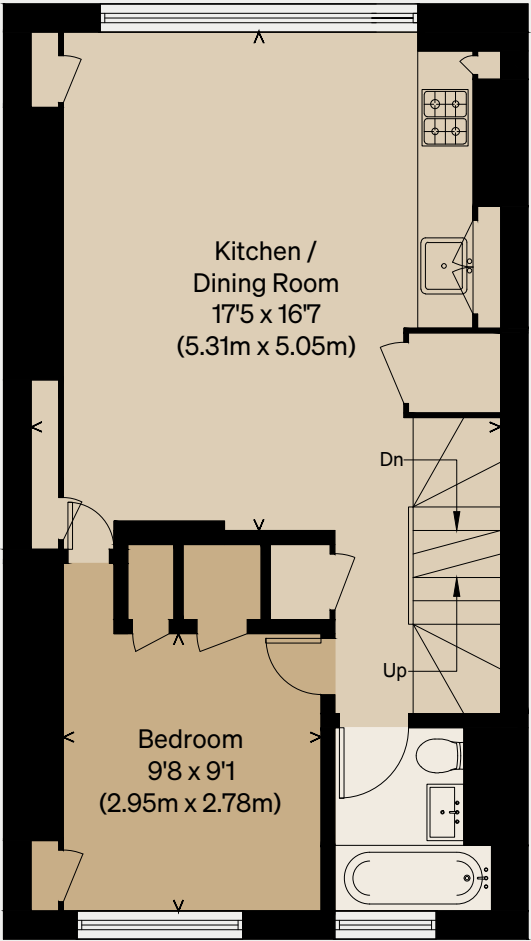
LONDON W1

Approximate Floor Area = 71.9 sq m / 774 sq ft
Restricted Head Height = 7.9 sq m / 85 sq ft
Total = 79.8 sq m / 859 sq ft

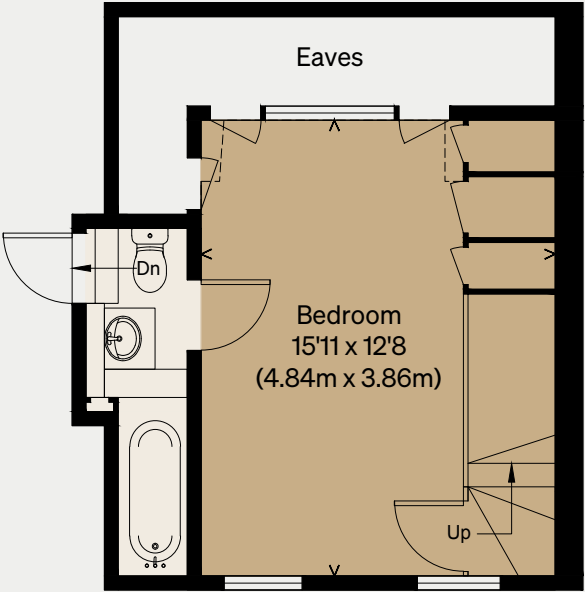
Illustration for identification purposes only,
measurements are approximate, not to scale



THIRD FLOOR



FOURTH FLOOR



FIFTH FLOOR