

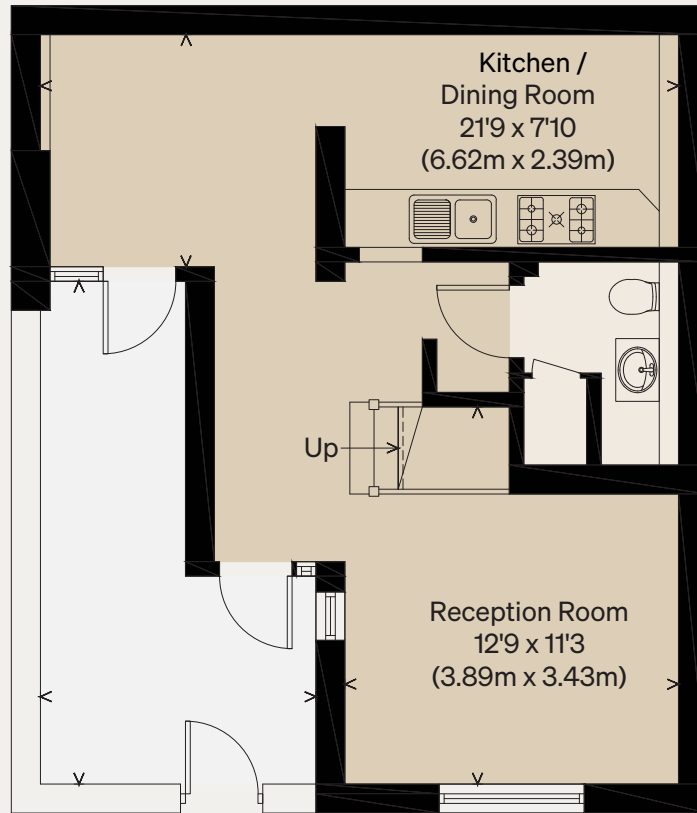
THE MODERN HOUSE

Approximate Floor Area = 57.8 sq m / 622 sq ft (Excluding Reduced Head Heights)  
Reduced Head Heights = 3.4 sq m / 36 sq ft  
Total = 61.2 sq m / 658 sq ft

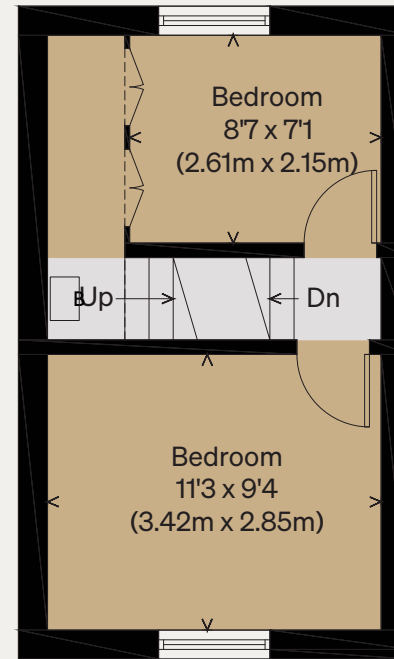
# Ezra Street

LONDON E2

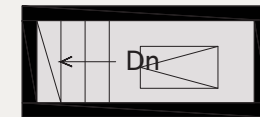
Illustration for identification purposes only,  
measurements are approximate, not to scale



GROUND FLOOR



FIRST FLOOR



SECOND FLOOR  
(STORAGE)

