

THE MODERN HOUSE

Piggery and Tithe Barn

EDGEFIELD, NORFOLK

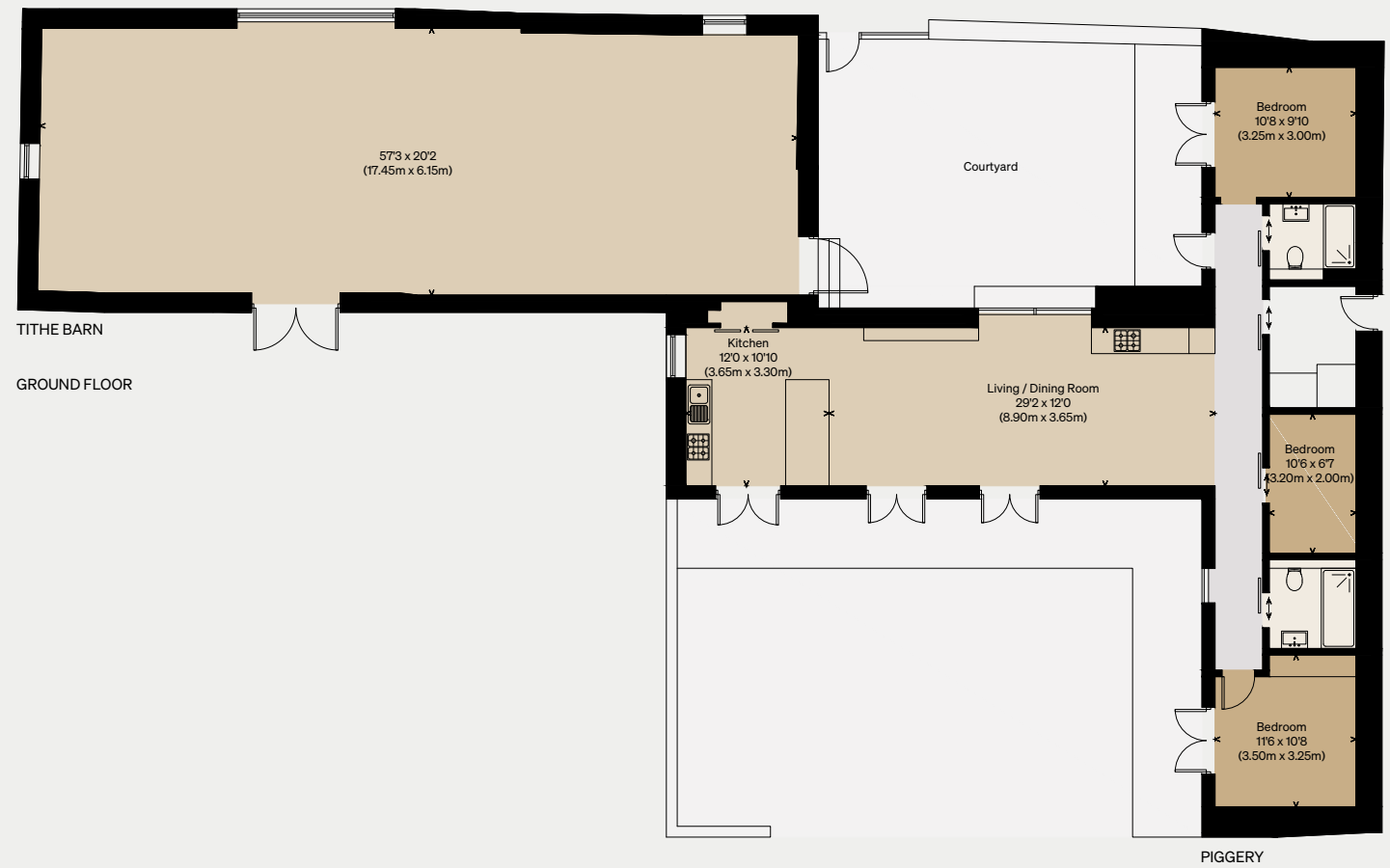
Existing Floorplan:

Approximate Floor Area = 103 sq m / 1109 sq ft

Tithe Barn = 213.9 sq m / 2302 sq ft

Total = 316.9 sq m / 3411 sq ft

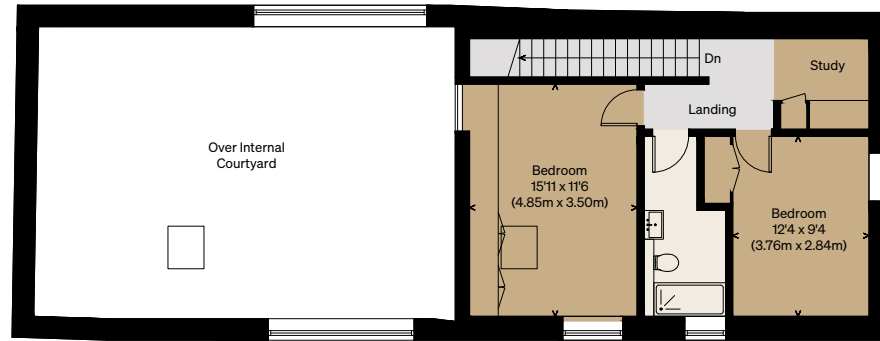
Illustration for identification purposes only,
measurements are approximate, not to scale



THE MODERN HOUSE

Piggery and Tithe Barn

EDGEFIELD, NORFOLK

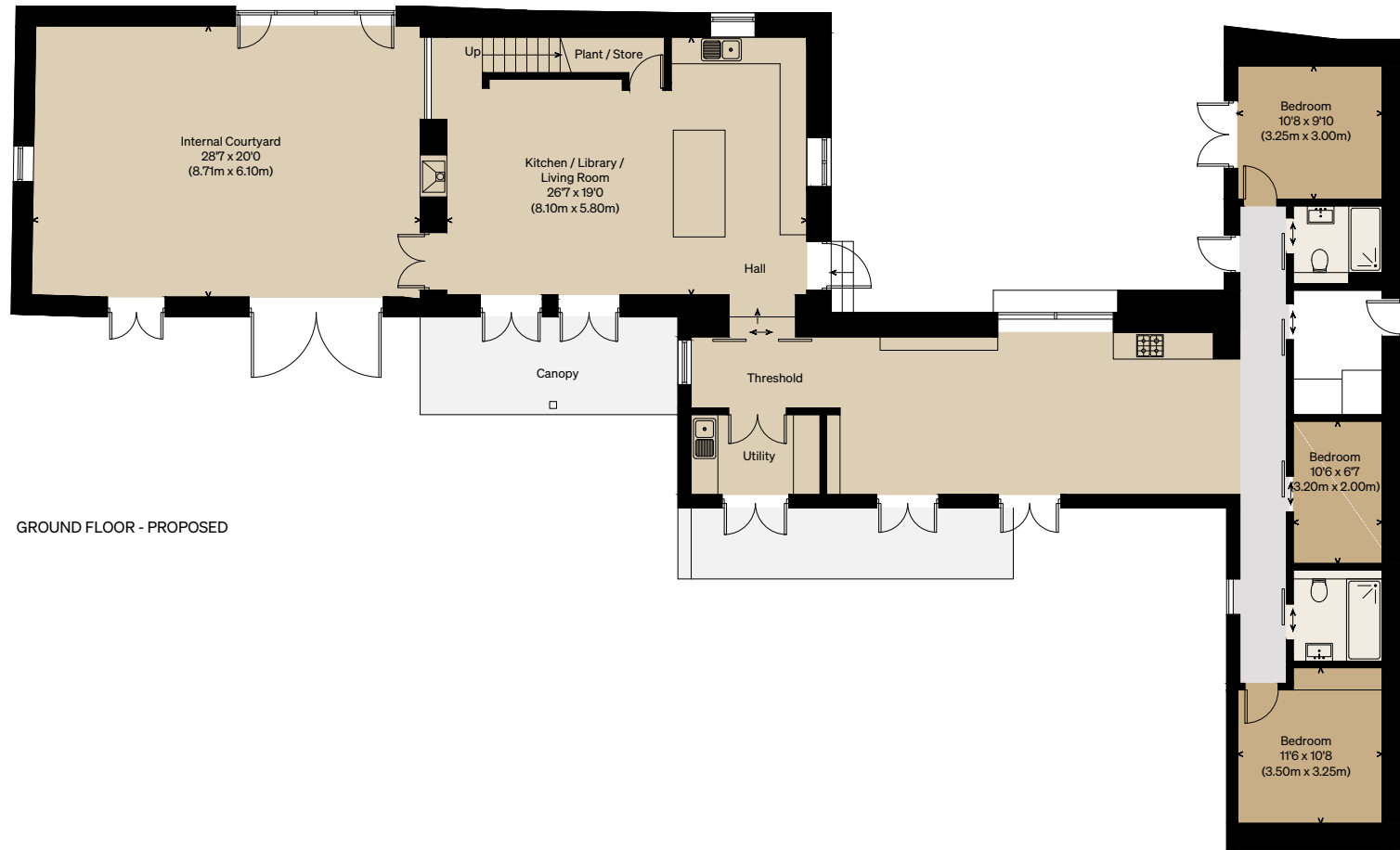


PROPOSED - FIRST FLOOR

Proposed Floorplan:

Approximate Floor Area = 256.7 sq m / 2763 sq ft
(Including Internal Courtyard)

Illustration for identification purposes only,
measurements are approximate, not to scale



GROUND FLOOR - PROPOSED

