

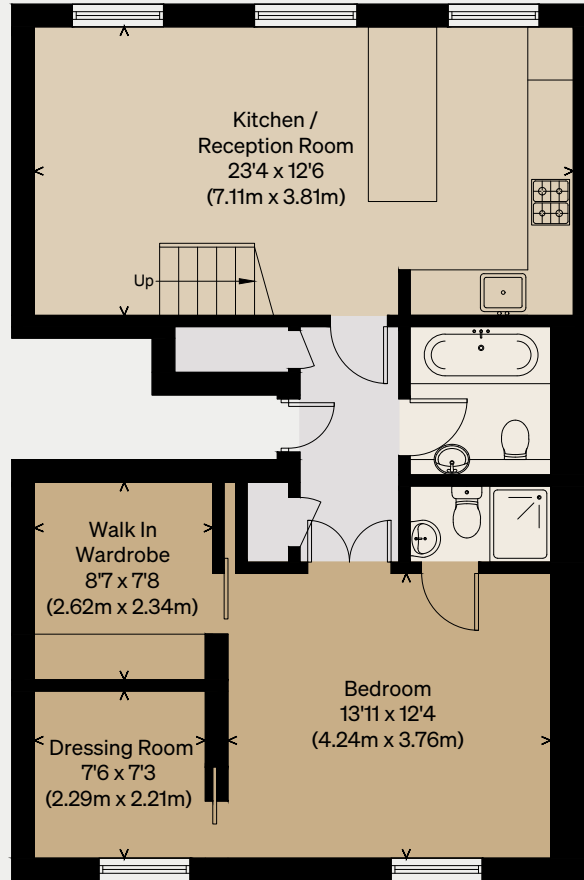
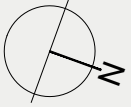
THE MODERN HOUSE

# Highbury Hill II

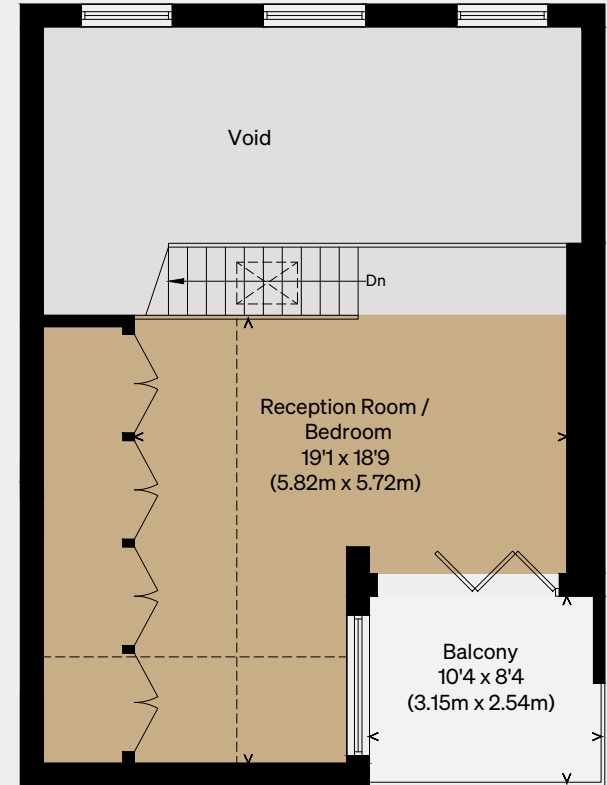
LONDON N5

Approximate Floor Area = 91 sq m / 980 sq ft  
Reduced Head Height = 16 sq m / 172 sq ft  
Total = 107 sq m / 1152 sq ft

Illustration for identification purposes only,  
measurements are approximate, not to scale



SECOND FLOOR



MEZZANINE