

THE MODERN HOUSE

# Swarovski House III

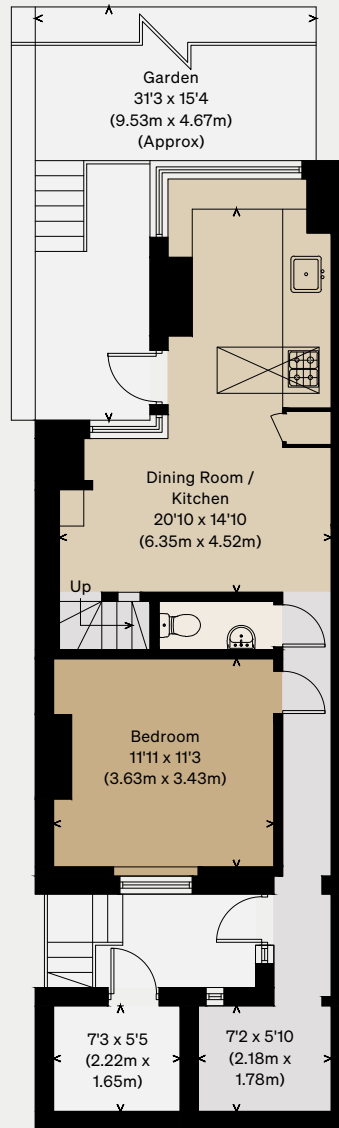
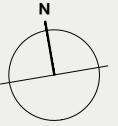
LONDON N1

Approximate Floor Area = 110.8 sq m / 1193 sq ft  
(Excluding Void, Including Restricted Head Height)

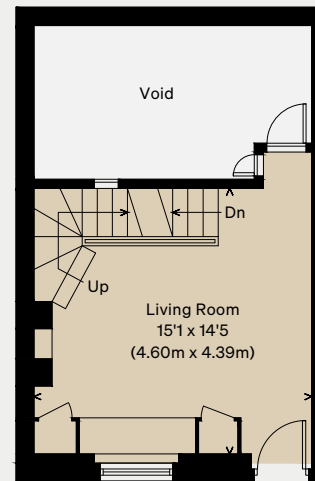
Store = 3.8 sq m / 41 sq ft

Total = 114.6 sq m / 1234 sq ft

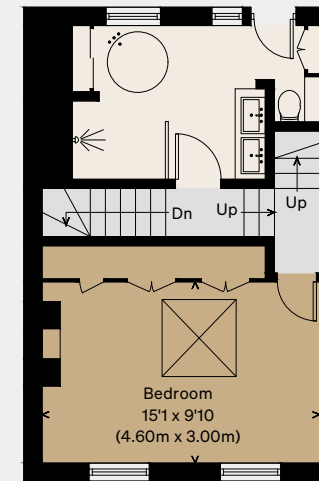
Illustration for identification purposes only,  
measurements are approximate, not to scale



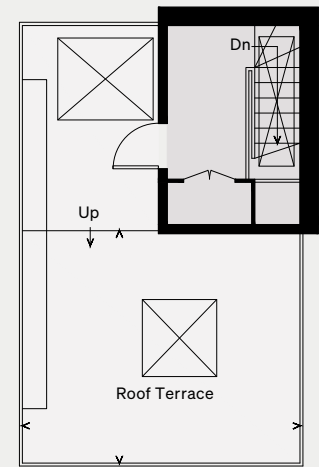
LOWER GROUND FLOOR



RAISED GROUND FLOOR



FIRST FLOOR



SECOND FLOOR