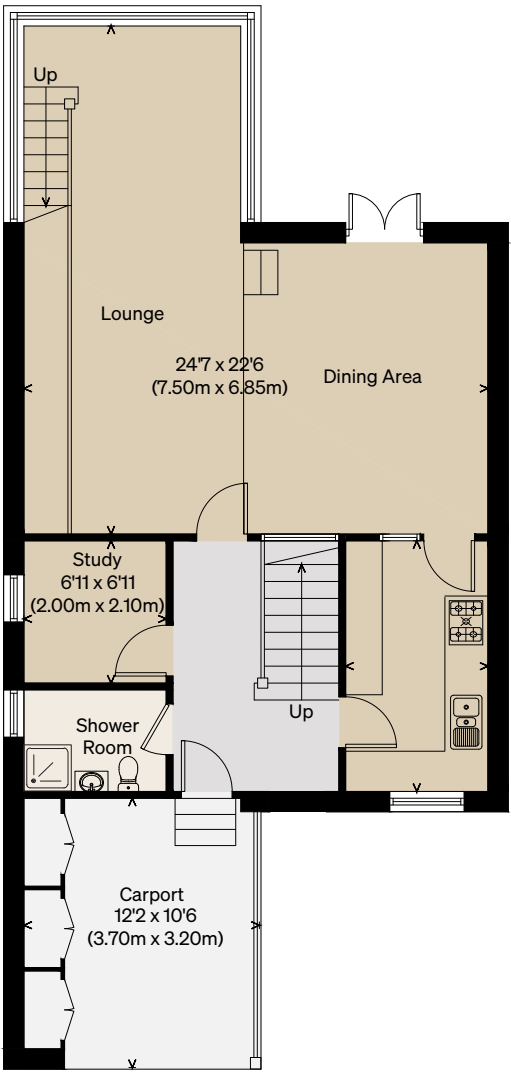
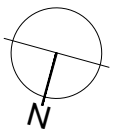


Chesterton Road

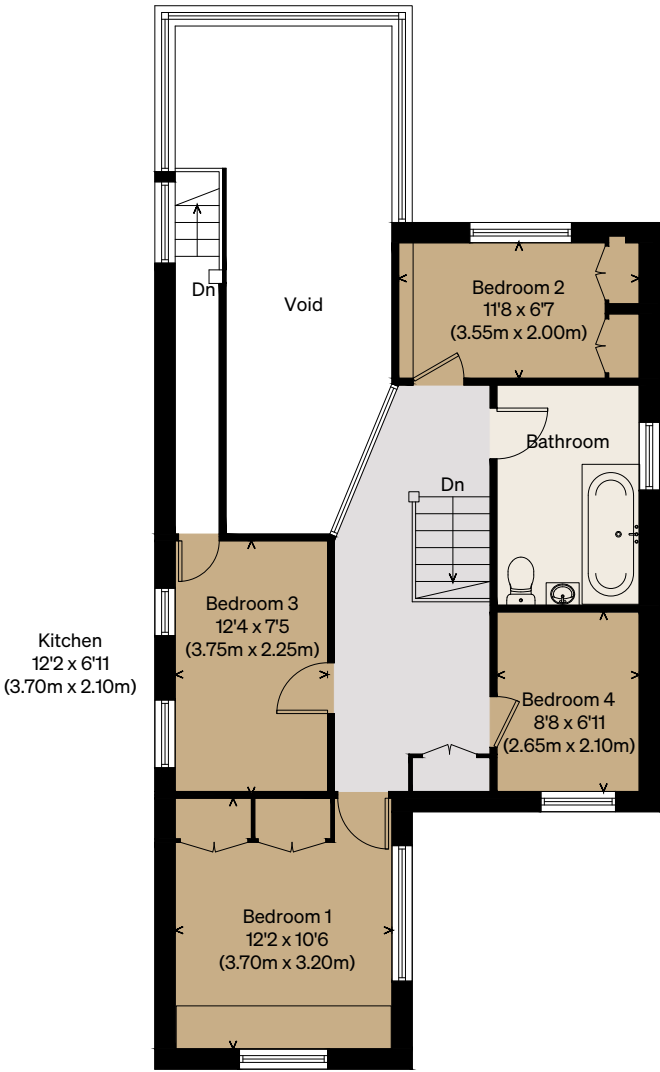
CAMBRIDGE, CAMBRIDGESHIRE

Approximate Floor Area = 120.2 sq m / 1294 sq ft
(Excluding Vaulted Landing / Carport)

Illustration for identification purposes only,
measurements are approximate, not to scale



EXISTING GROUND FLOOR



EXISTING FIRST FLOOR

EXISTING

THE MODERN HOUSE

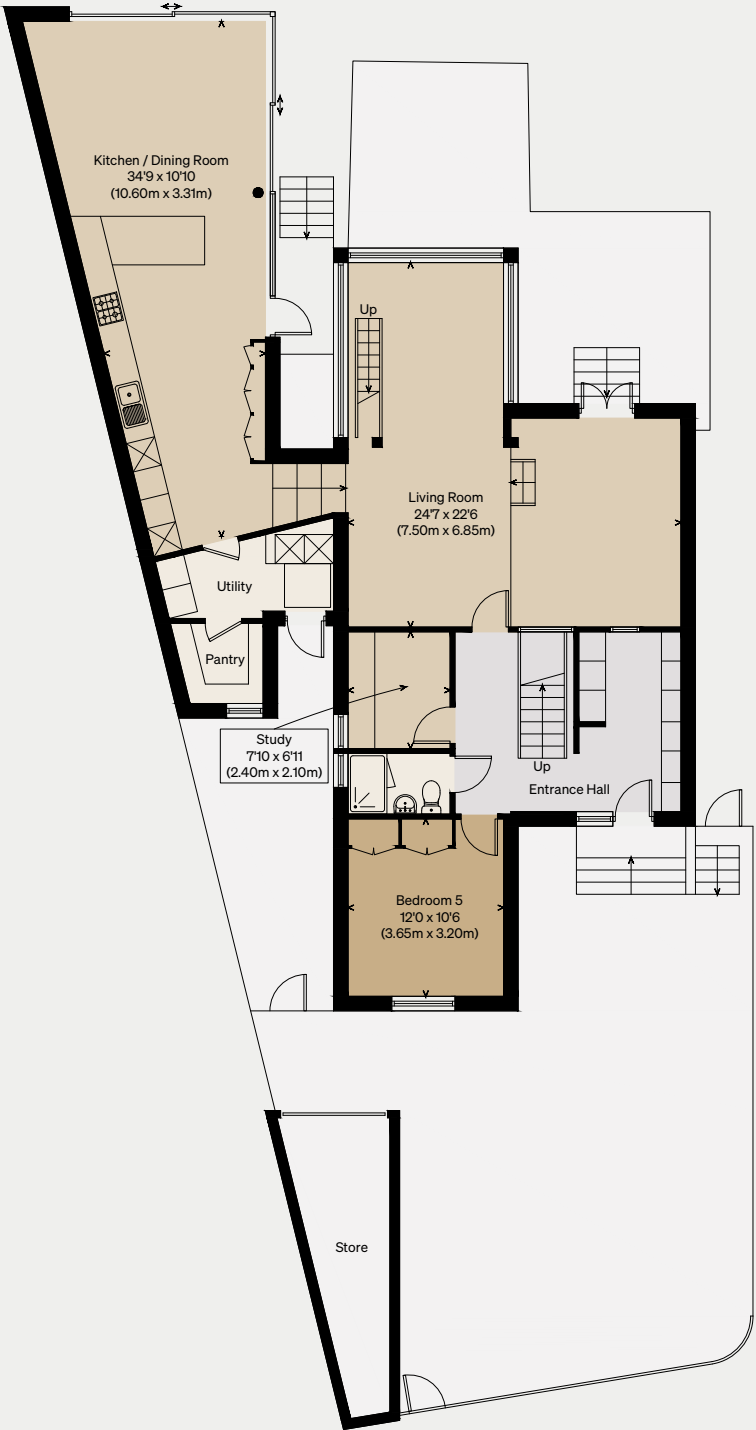
Chesterton Road

CAMBRIDGE, CAMBRIDGESHIRE

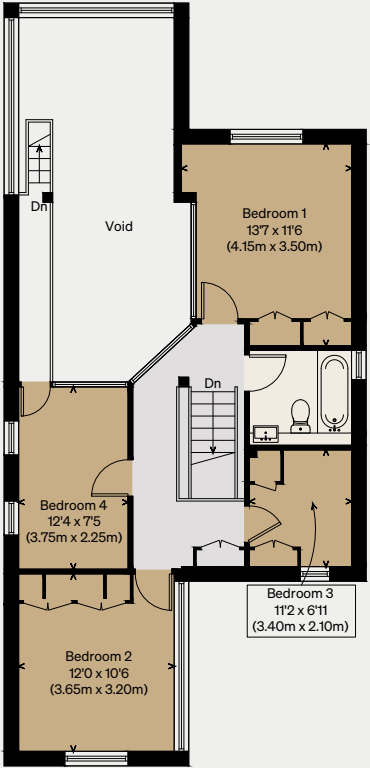
Approximate Floor Area = 185.0 sq m / 1991 sq ft
Store = 9.6 sq m / 103 sq ft
Total = 194.6 sq m / 2094 sq ft
(Excluding Void)

Illustration for identification purposes only,
measurements are approximate, not to scale

PROPOSED



PROPOSED GROUND FLOOR



PROPOSED FIRST FLOOR