

THE MODERN HOUSE

Murray Mews VI

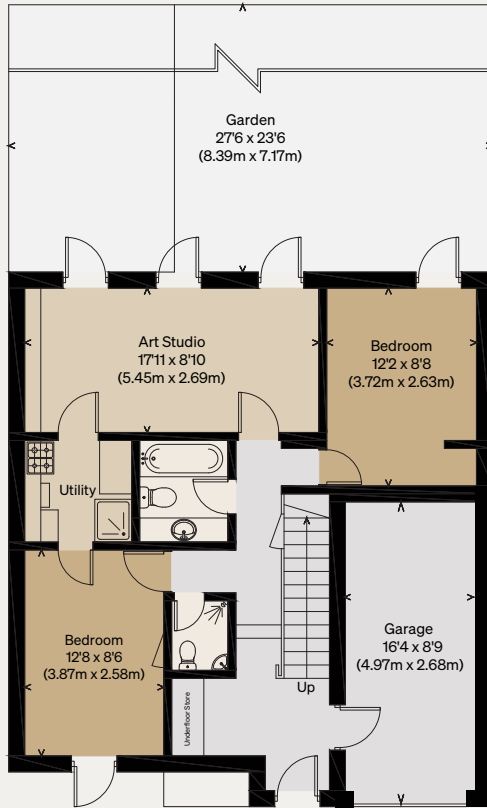
LONDON NW1

Approximate Floor Area = 163.5 sq m / 1760 sq ft

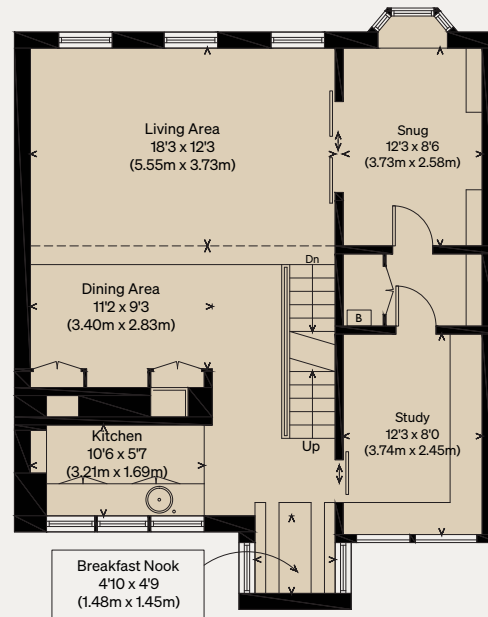
Garage = 13.3 sq m / 143 sq ft

Total = 176.8 sq m / 1903 sq ft

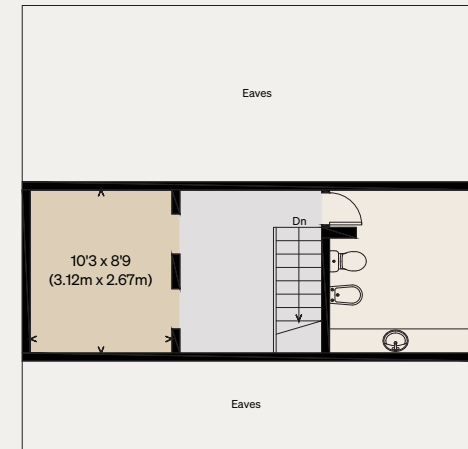
Illustration for identification purposes only,
measurements are approximate, not to scale



GROUND FLOOR



FIRST FLOOR



SECOND FLOOR